

## JEEP T90 3 SPEED TRANSMISSION TO CHEVY & BUICK ENGINES

### KIT CONSISTS OF:

No.	Qty	Part No.	Description
1.	1	711502A	ADAPTER CASTING
2.	1	711509	CHEVY CASTING
3.	1	716046	RETAINER (AA-OD)
4.	1	716171	PILOT BEARING (.629" I.D.)
5.	1	*716706	NATIONAL SEAL #482208 (INSTALLED AT A.A.)
6.	4	723119	S.H.C.S. 5/16 -18 X 1-1/4 black oxide
7.	4	724303	LOCK WASHER 7/16 STD PLTD
8.	2	724328	7/16 -14 X 1-1/4 H.H.C.S. gr. 5 zinc
9.	2	724341	F.H.S.C.S. 7/16 -14 x 2
10.	4	724349	7/16 -14 X 1-1/2 Grd 5 hhcs
11.	4	725016	S.H.C.S. 1/2"-13 x 1-1/2" LONG

### OPTIONAL ITEMS:

Qty	Part No.	Description
1	716179	CLUTCH REL ARM

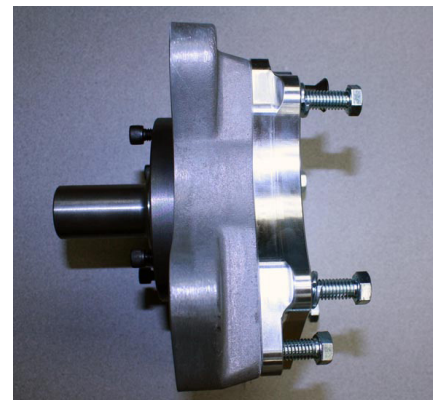
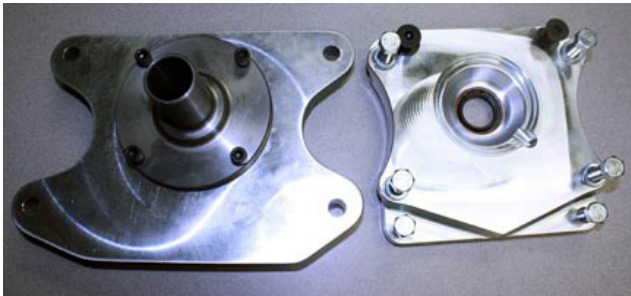
### INSTALLATION INSTRUCTIONS:

When replacing a 4 cylinder engine, a new transmission input shaft, Advance Adapter Part No. 716014, will be required. A new cluster gear, Part No. 716018, is required when replacing a 16 tooth input shaft. Most conversions will require the transfer case to be moved forward in order to obtain a good engine position. This will require driveshaft modifications. The engine should be offset towards the driver's side by approximately 1" in order to allow for drive-shaft and starter motor clearance.

1. Install pilot bushing into the engine crank shaft. Bolt the two adapters together and install the bearing retainer to the 509 plate. use locktite on the fasteners.
2. Install seal into the new adapter plate with the open side towards the transmission. Use a small film of RTV silicone to mate the 711502A adapter to the face of the T90 transmission. This plate replaces the front bearing retainer and the silicone will prevent any leaks from the transmission.
3. Bolt the transmission to the adapter plate using the 7/16-14 x 1-1/2" bolts.
4. The following Chevy or Buick parts will be necessary:

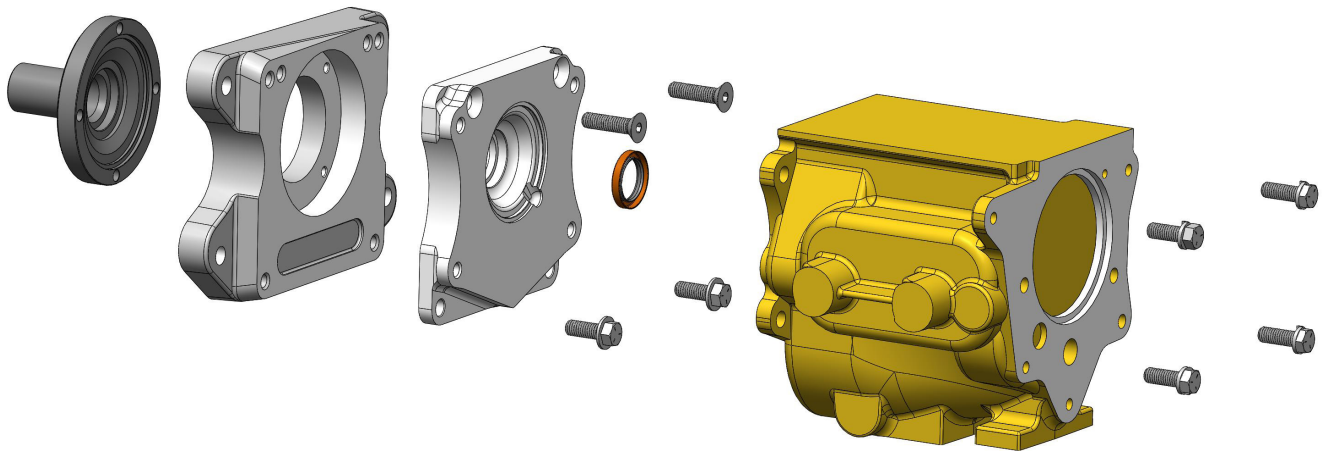
*Clutch Release Bearing  
Clutch Release Lever  
Pressure Plate  
Clutch Disc with 1-1/8"-10  
Flywheel  
Bellhousing with small index diameter of 4.686"*

5. Bolt the adapter plate to the new bellhousing using the new bolts supplied.



**SPECIAL NOTE:** The components packaged in this kit have been assembled and machined for specific type of conversions. Modifications to any of the components will void any possible warranty or return privileges. If you do not fully understand modifications or changes that will be required to complete your conversion, we strongly recommend that you contact our sales department for more information. This instruction sheet is only to be used for the assembly of Advance Adapter components. We recommend that a service manual pertaining to your vehicle be obtained for specific torque values, wiring diagrams and other related equipment. These manuals are normally available at automotive dealerships and parts stores.

## JEEP T90 3 SPEED TRANSMISSION TO CHEVY & BUICK ENGINES



### **11" CLUTCH ITEMS:**

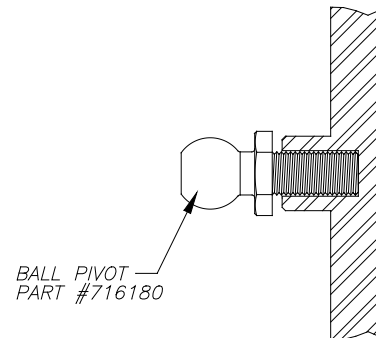
11" CLUTCH PRESSURE PLATE (Part #CF165552)  
11" CLUTCH DISC. (Part #383735)  
CLUTCH RELEASING BEARING (Part No. N1430)  
BALL PIVOT (Part #716180)

### **10.5" CLUTCH ITEMS:**

10.5" CLUTCH PRESSURE PLATE. (Part #CF360056)  
10.5" CLUTCH DISC. (Part #383271)  
CLUTCH RELEASE BEARING (Part #N1430)  
BALL PIVOT (Part #716180)

### **NOTES:**

1. Be sure to grease inside pocket diameter of bearing. This will provide lubrication on the bearing retainer.
2. Release bearing should have .060" clearance between fingers and face of bearing.
3. Clutch disc should have .030" clearance between flywheel and disc when fully disengaged.
4. Grease ball pivot for maximum clutch performance. (Fits all GM bellhousings). The snap ring inside of clutch arm will hold lever on ball pivot.



DETAIL-A

**SPECIAL NOTE:** The components packaged in this kit have been assembled and machined for specific type of conversions. Modifications to any of the components will void any possible warranty or return privileges. If you do not fully understand modifications or changes that will be required to complete your conversion, we strongly recommend that you contact our sales department for more information. This instruction sheet is only to be used for the assembly of Advance Adapter components. We recommend that a service manual pertaining to your vehicle be obtained for specific torque values, wiring diagrams and other related equipment. These manuals are normally available at automotive dealerships and parts stores.