

ADVANCE ADAPTERS INC.

P.O. Box 247, 4320 Aerotech Center Way
Paso Robles, CA 93447
Telephone: (800) 350-2223 Fax: (805) 238-4201

P/N: 712553

New Item: (02/96)
PAGE 1 OF 2
Page Rev. Date: 09-24-97

DODGE GAS DESIGN NV4500 TRANS TO AMC BELLHOUSING

KIT CONSISTS OF:

No.	Qty	Part No.	Description
1.	1	712551-PLT	ADAPTERPLATE
2.	1	716164	AMCPILOTBUSHING.750"DODGEID
3.	4	724303	7/16"LOCK WASHERS
4.	4	724317	S.H.C.S.7/16"-14x1-1/4"LG
5.	4	724349	H.H.C.S.7/16"-14" x 1-1/2"LG
6.	1	NV001	NVINSTRUCTIONMANUAL

GENERAL INFORMATION

1. This adapter plate is only compatible with Dodge NV4500 transmissions that were used with the gas engines. It is not compatible with transmissions that were used with diesel applications. The input shaft on the front of the transmission must stickout 7-1/2".
2. The bearing retainer on the front of the Dodge transmission already has the correct size for the AMC clutch release bearing. The retainer length must protrude 3.750" from the face of the new adapter plate. It may be necessary to shorten the retainer in order to avoid any interference with the clutch disc hub. The shortening can be done by simply hack sawing the retainer to the correct length.
3. Be sure to inspect the new pilot bushing on the tip of the new transmission input shaft. Make sure that the inside diameter properly matches the Dodge 5 speed transmission. The pilot bushing must be installed into the back of the AMC engine crank. It may be necessary to shorten the tip of the input shaft in order to prevent bottoming out in the AMC engine crank. **DO NOT FORCE** the transmission into position prior to checking the input shaft depth.
4. The clutch release mechanism can either be mechanical or hydraulic. The exact configuration will depend on what your vehicle was originally equipped with and which type of bellhousing you are using.
5. This adapter plate is designed for the Jeep bellhousings from a T150 & T176 application. Jeep numbers are 8133951 and 3236291. Some of the bellhousings from the Jeep T4, T5, and SR5 have the provision for this bolt pattern which may be two different ways: (1) The holes are already drilled and tapped, or (2) a die cast pilot hole is provided in which you would have to drill the bellhousing to install the adapter plate. If these are not an option for your application you should obtain one of the above Jeep bellhousing numbers.

NOTE: This kit does not work with a stock 4 cylinder bellhousing.

SPECIAL NOTE: The components packaged in this kit have been assembled and machined for specific type of conversions. Modifications to any of the components will void any possible warranty or return privileges. If you do not fully understand modifications or changes that will be required to complete your conversion, we strongly recommend that you contact our sales department for more information. This instruction sheet is only to be used for the assembly of Advance Adapter components. We recommend that a service manual pertaining to your vehicle be obtained for specific torque values, wiring diagrams and other related equipment. These manuals are normally available at automotive dealerships and parts stores.

ADVANCE ADAPTERS INC.

P.O. Box 247, 4320 Aerotech Center Way

Paso Robles, CA 93447

Telephone: (800) 350-2223 Fax: (805) 238-4201

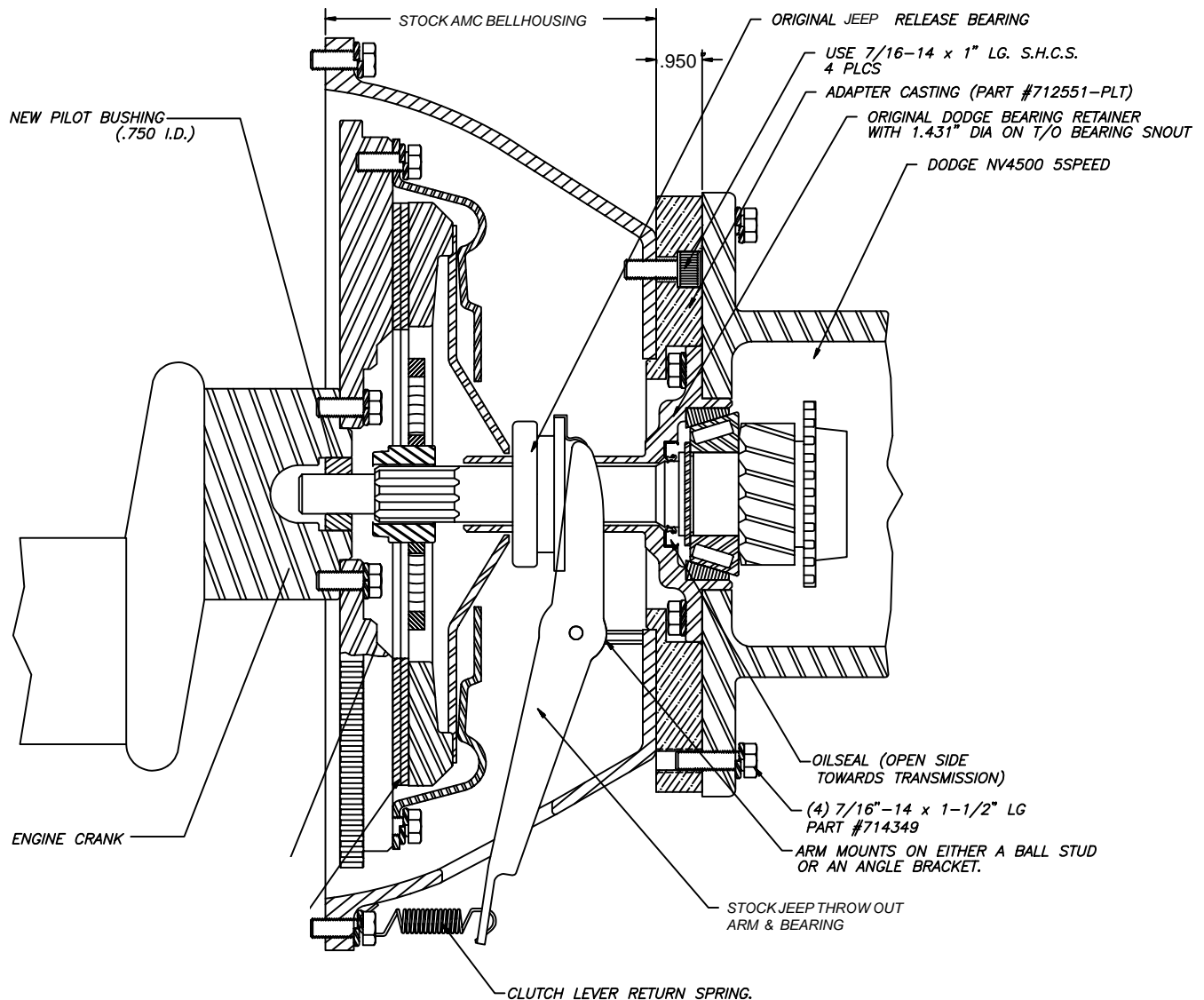
P/N: 712553

New Item: (2/96)

PAGE 2 OF 2

Page Rev. Date: 02-23-12

DODGE GAS DESIGN NV4500 TRANS TO AMC BELLHOUSING



NOTE:

If you are using the Heavy Duty Dodge NV4500, the bearing retainer will need to be turned down to a dia. of 1.431". The clutch disc must be a 1-1/4"-10 spline.

SPECIAL NOTE: The components packaged in this kit have been assembled and machined for specific type of conversions. Modifications to any of the components will void any possible warranty or return privileges. If you do not fully understand modifications or changes that will be required to complete your conversion, we strongly recommend that you contact our sales department for more information. This instruction sheet is only to be used for the assembly of Advance Adapter components. We recommend that a service manual pertaining to your vehicle be obtained for specific torque values, wiring diagrams and other related equipment. These manuals are normally available at automotive dealerships and parts stores.