

ADVANCE ADAPTERS INC.

P.O. Box 247, 4320 Aerotech Center Way
Paso Robles, CA 93447

Telephone: (800) 350-2223 Fax: (805) 238-4201

P/N: 50-0500

Old Part No: 711005

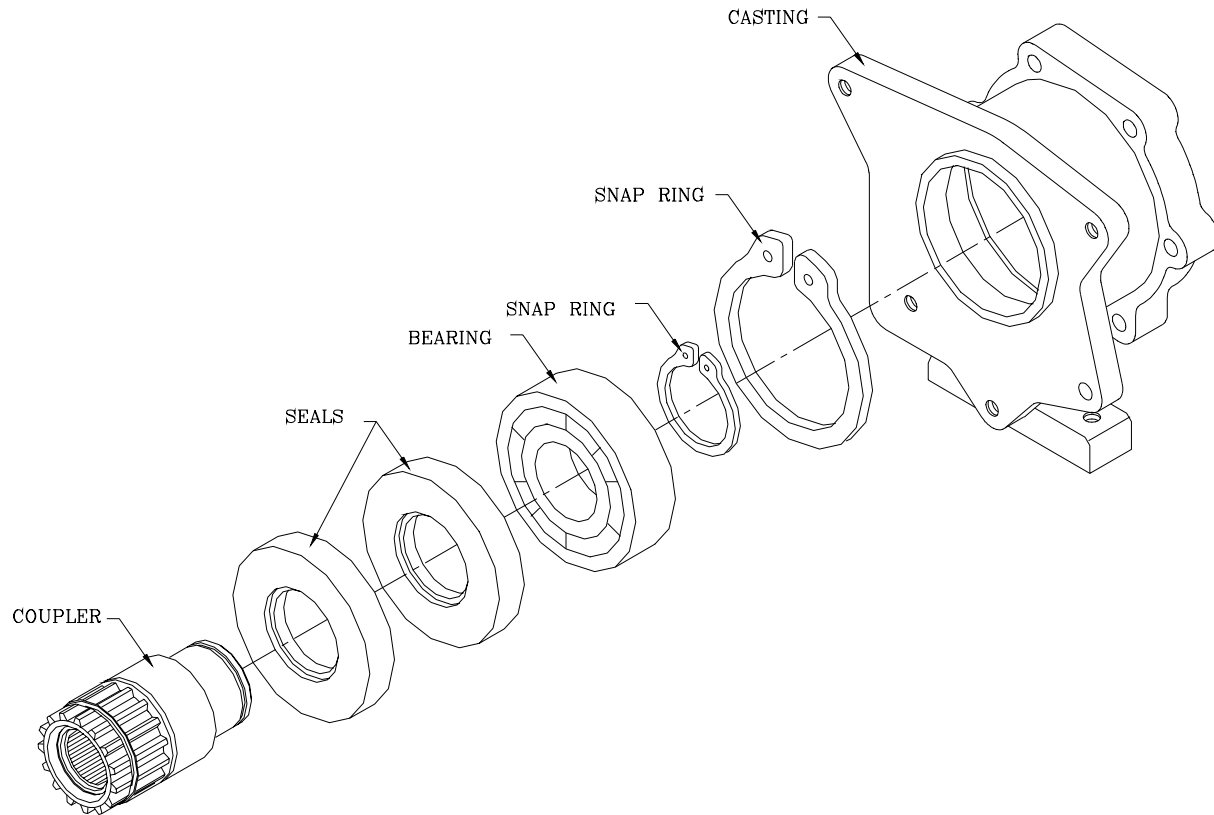
PAGE 1 OF 3

Page Rev. Date: 11-29-00

TURBO 400 TO JEEP DANA 20 SPICER TRANSFER CASES

KIT CONSISTS OF:

No.	Qty	Part No.	Description
1.	1	51-0500	ADAPTER CASTING (Ref: 711105)
2.	1	52-0500	COUPLER SHAFT (Ref: 711305)
3.	1	716309	BEARING (FAFNIR #310K)
4.	1	716451	SNAPRING
5.	1	716458	SNAPRING
6.	1	716510	GASKET (GM #862-4709)
7.	1	716568	GASKET
8.	2	716743	SEAL (NAT #417073)
9.	6	723701	HEXNUT
10.	6	723714	3/8"-16x1-1/2" STUDBOLT
11.	1	JP001	JEEP INSTRUCTION MANUAL



SPECIAL NOTE: The components packaged in this kit have been assembled and machined for specific type of conversions. Modifications to any of the components will void any possible warranty or return privileges. If you do not fully understand modifications or changes that will be required to complete your conversion, we strongly recommend that you contact our sales department for more information. This instruction sheet is only to be used for the assembly of Advance Adapter components. We recommend that a service manual pertaining to your vehicle be obtained for specific torque values, wiring diagrams and other related equipment. These manuals are normally available at automotive dealerships and parts stores.

ADVANCE ADAPTERS INC.

P.O. Box 247, 4320 Aerotech Center Way
Paso Robles, CA 93447

Telephone: (800) 350-2223 Fax: (805) 238-4201

P/N: 50-0500

Old Part No: 711005

PAGE 2 OF 3

Page Rev. Date: 01-04-12

TURBO 400 TO JEEP DANA 20 SPICER TRANSFER CASES

GM TURBO 400 3 SPEED AUTOMATIC

The GM TH400 has a case length of 24-3/4", 13 bolts for holding the oil pan in position and is available in 3 different engine to transmission bolt patterns. Make sure you have selected the proper TH400 for your particular engine. The AMC TH400 case when used with the Chevy engine will require adapter Kit No. 716133. The rear side of the transmission case will have a hex shaped bolt pattern that uses 6 bolts. There are several various length of output shafts that the transmission could have been equipped with. This kit must be used with the GM short shaft and you must make sure you have the "O"-ring seal to prevent fluid from entering the transfer case. The speedometer gear is normally located in the tailhousing, but when adapting it to the transfer case, the location will change to the backside of the transfer case. The rear transmission support will be located on the new adapter housing.

When installing the new transfer case adapter, make sure that the coupler fits over the "O"-ring seal of the TH400 output shaft. If your shaft does not have the "O"-ring seal, then the fluid from the transmission will transfer into the transfer case. The adapter is similar in design to the original Jeep equipment used in 1971 & 1973. The output gear or snap ring is not furnished with each kit and the customer will be responsible for obtaining the output gear. The adapter assembly uses two (2) seals that must be installed in opposite directions with the open side towards the fluids. The coupler assembly must be locked into the adapter housing with the large snap ring that is illustrated in the diagram. The position of the coupler is what determines the gear location in the transfer case.

When assembling the adapter housing to the transmission case, we have provided you with a new gasket to prevent fluid leakage. This gasket is a stock GM item that is used on all TH400 installations.

On most installations, a slight pan modification may be required for clearance of the front Universal yoke. On early model Jeeps up to 1965, it may be necessary to change the yoke style to the smaller design. In order to allow for additional front drive line clearance, we recommend that the engine and transfer case be offset to the driver's side on vehicles having front drive shafts located on the passenger's side. On Jeep conversions this can be approximately 1" offset of centerline.

If you have selected a transmission that has the old style modulator, then we recommend the use of the Advance Adapters adjustable modulator, Part No. 716010. This will also allow for additional drive shaft clearance.

All installations will require the use of a transmission cooler. The cooler can be either installed in the radiator or a remote location is acceptable. The transmission shift control can either be a Hurst floor mounted type shifter or sometimes the existing column shift can be modified on certain applications.

CAUTION: Do not attempt the use of this with a Dana 18 transfer case using the 26 tooth kit.

Note: this casting will not work as a replacement casting for the stock Jeep TH400 adapter. Our complete kit must be used when replacing the factory Jeep adapter kit.

SPECIAL NOTE: The components packaged in this kit have been assembled and machined for specific type of conversions. Modifications to any of the components will void any possible warranty or return privileges. If you do not fully understand modifications or changes that will be required to complete your conversion, we strongly recommend that you contact our sales department for more information. This instruction sheet is only to be used for the assembly of Advance Adapter components. We recommend that a service manual pertaining to your vehicle be obtained for specific torque values, wiring diagrams and other related equipment. These manuals are normally available at automotive dealerships and parts stores.

ADVANCE ADAPTERS INC.

P.O. Box 247, 4320 Aerotech Center Way
Paso Robles, CA 93447

Telephone: (800) 350-2223 Fax: (805) 238-4201

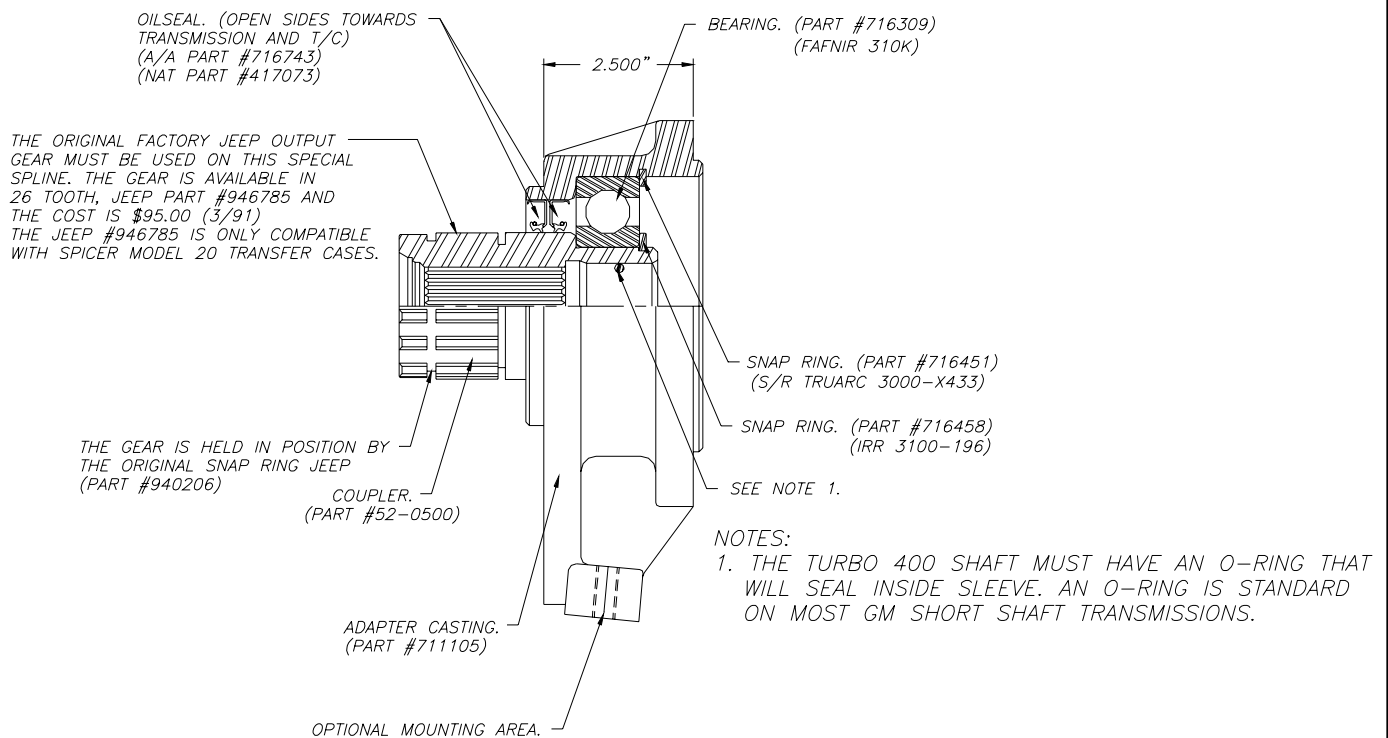
P/N: 50-0500

Old Part No: 711005

PAGE 3 OF 3

Page Rev. Date: 09-17-08

TURBO 400 TO JEEP DANA 20 SPICER TRANSFER CASES



SPECIAL NOTE: The components packaged in this kit have been assembled and machined for specific type of conversions. Modifications to any of the components will void any possible warranty or return privileges. If you do not fully understand modifications or changes that will be required to complete your conversion, we strongly recommend that you contact our sales department for more information. This instruction sheet is only to be used for the assembly of Advance Adapter components. We recommend that a service manual pertaining to your vehicle be obtained for specific torque values, wiring diagrams and other related equipment. These manuals are normally available at automotive dealerships and parts stores.