

ADVANCE ADAPTERS INC.

P.O. Box 247, 4320 Aerotech Center Way
Paso Robles, CA 93447
Telephone: (800) 350-2223 Fax: (805) 238-4201

P/N: 712518

PAGE 1 OF 2
Page Rev. Date: 03-04-16

JEEP T18-T98 4 SPEED TRANSMISSION TO FORD ENGINES

KIT CONSISTS OF:

No.	Qty	Part No.	Description
1.	1	711521-2	ADAPTERCASTING
2.	1	712511	JEEPT153SP-LATEFORDV8
3.	1	716173	PILOTBUSHING
4.	4	724303	LOCKWASHER
5.	4	724308	H.H.C.S. 7/16"-14x 1-1/2"
6.	1	JP001	JEEPINSTRUCTIONMANUAL

INSTALLATION INSTRUCTIONS:

This transmission should be equipped with a Jeep input shaft, No. 916341, that protrudes from the front of the transmission case approximately 10". The original application may have been equipped with a steel adapter plate that was approximately 1" thick. The new adapter is a two part kit that requires the 2 plates to be bolted together prior to assembling to the transmission. The original steel adapter plate is not interchangeable. A silicone seal must be used between the adapter plate and transmission and between the two adapter plates to prevent oil leakage. A new oil seal is used in the front bearing retainer to prevent oil from entering the clutch area. The seal must be installed with the open side towards the transmission.

1. Bolt the two adapters together using the gasket or silicone sealer.
2. Install the oil seal with the open side towards the transmission.
3. Bolt the new bearing retainer onto the front adapter housing using the 4 new bolts provided.
4. Assemble the adapters to the transmission using a silicone seal between the two and using the original bolts.
5. The following Ford parts will be necessary:

Clutch Release Bearing

Clutch Release Lever

Pressure Plate

Clutch Disc with 1-1/8"-10 Spline

Flywheel

Bellhousing with small index diameter of 4.848

SPECIAL NOTE: The components packaged in this kit have been assembled and machined for specific type of conversions. Modifications to any of the components will void any possible warranty or return privileges. If you do not fully understand modifications or changes that will be required to complete your conversion, we strongly recommend that you contact our sales department for more information. This instruction sheet is only to be used for the assembly of Advance Adapter components. We recommend that a service manual pertaining to your vehicle be obtained for specific torque values, wiring diagrams and other related equipment. These manuals are normally available at automotive dealerships and parts stores.

ADVANCE ADAPTERS INC.

P.O. Box 247, 4320 Aerotech Center Way

Paso Robles, CA 93447

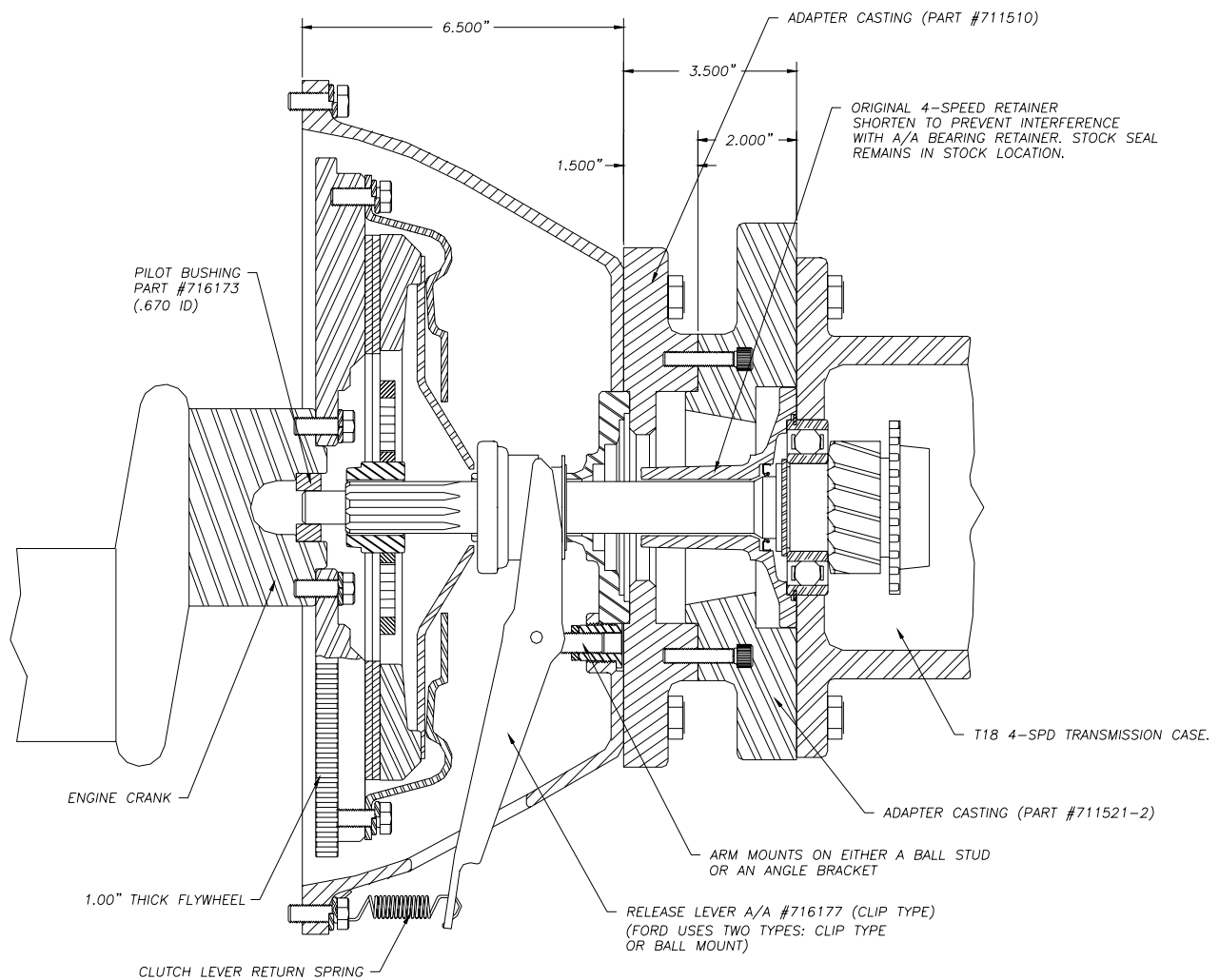
Telephone: (800) 350-2223 Fax: (805) 238-4201

P/N: 712518

PAGE 2 OF 2

Page Rev. Date: 04-28-00

JEEP T18-T98 4 SPEED TRANSMISSION TO FORD ENGINES



SPECIAL NOTE: The components packaged in this kit have been assembled and machined for specific type of conversions. Modifications to any of the components will void any possible warranty or return privileges. If you do not fully understand modifications or changes that will be required to complete your conversion, we strongly recommend that you contact our sales department for more information. This instruction sheet is only to be used for the assembly of Advance Adapter components. We recommend that a service manual pertaining to your vehicle be obtained for specific torque values, wiring diagrams and other related equipment. These manuals are normally available at automotive dealerships and parts stores.