

# ADVANCE ADAPTERS INC.

P.O. Box 247, 4320 Aerotech Center Way

Paso Robles, CA 93447

Telephone: (800) 350-2223 Fax: (805) 238-4201

## P/N: 50-3703

New Item: (1994)

PAGE 1 OF 3

Page Rev. Date: 10-17-11

## 700R-4 TO TOYOTA 4WD T/C 26T INPUT 1987 & UP TOYOTA TRUCK 4WD VEHICLES

### KIT CONSISTS OF:

No.	Qty	Part No.	Description
1.	1	51-3700	ADAPTER CASTING (Ref: 711137)
2.	1	52-3703	SPECIAL 700R-4 OUTPUT SHAFT
3.	1	716511	O~RING (GM# 135-8899)
4.	1	716741	SEAL (NAT# 450065) <b>(INSTALLED IN CASTING)</b>
5.	4	720056	S.H.C.S. 10MM X 1.5 X 60 MM
6.	1	TT001	TOYOTA TRUCK INSTRUCTION MANUAL

### INSTRUCTIONS:

Before assembling the transmission with the new output shaft, you should verify that you have received the correct adapter for your application. This adapter fits Toyota 4WD trucks that were manufactured after November 1987, and were normally equipped with the Toyota V6 engine. There are two different output shafts available. There is a 23 spline and a 26 spline. We have no way of identifying the spline size prior to disassembly of your transmission and transfer case. It will be the customer's responsibility to determine the correct spline size.

There are 2 special dowel pins that locate the transfer case to the new Advance Adapter housing. The assembled overall length will be slightly longer than the original transmission and driveline modifications will be required on V8 conversions. The crossmember will need to be relocated or a new support bracket welded to the back side of the original transfer case support.

**SPECIAL NOTE:** The components packaged in this kit have been assembled and machined for specific type of conversions. Modifications to any of the components will void any possible warranty or return privileges. If you do not fully understand modifications or changes that will be required to complete your conversion, we strongly recommend that you contact our sales department for more information. This instruction sheet is only to be used for the assembly of Advance Adapter components. We recommend that a service manual pertaining to your vehicle be obtained for specific torque values, wiring diagrams and other related equipment. These manuals are normally available at automotive dealerships and parts stores.

# **ADVANCE ADAPTERS INC.**

P.O. Box 247, 4320 Aerotech Center Way

Paso Robles, CA 93447

Telephone: (800) 350-2223 Fax: (805) 238-4201

**P/N: 50-3703**

New Item: (1994)

PAGE 2 OF 3

Page Rev. Date: 08-23-94

## **700R-4 TO TOYOTA 4WD T/C 26T INPUT 1987 & UP TOYOTA TRUCK 4WD VEHICLES**

### **700R-4 4 SPEED AUTOMATIC:**

The GM 700R-4 has a case length of 23-3/8" and is available in the GM engine pattern only. The rear side of the transmission case will have a square bolt pattern that utilizes 4 metric bolts. There are several variations to the output shaft lengths and since you are installing a new output shaft, any of the 700R-4 transmissions will be acceptable. You will need to replace the original shaft with the new Advance Adapter output shaft. The rear transmission support is located on the main case just forward of the tailhousing. We recommend that you only use the Toyota transfer case support area.

When installing the new transfer case adapter, make sure that the coupler and the output shaft do not bottom out.

When assembling the adapter housing to the transmission case, we have provided you with a new square-type "O" ring seal to prevent fluid leakage. This seal is a stock GM item that is used on all TH350 installations.

If you have selected a transmission that has the old style modulator, then we recommend the use of the Advance Adapters adjustable modulator, Part No. 716010. This will also allow for additional driveshaft clearance.

All installations will require the use of a transmission cooler. The cooler can be either installed in the radiator or a remote location is acceptable. The transmission shift control can either be a Hurst floor mounted type shifter or sometimes the existing column shift can be modified on certain applications.

**SPECIAL NOTE:** The components packaged in this kit have been assembled and machined for specific type of conversions. Modifications to any of the components will void any possible warranty or return privileges. If you do not fully understand modifications or changes that will be required to complete your conversion, we strongly recommend that you contact our sales department for more information. This instruction sheet is only to be used for the assembly of Advance Adapter components. We recommend that a service manual pertaining to your vehicle be obtained for specific torque values, wiring diagrams and other related equipment. These manuals are normally available at automotive dealerships and parts stores.

# ADVANCE ADAPTERS INC.

P.O. Box 247, 4320 Aerotech Center Way  
Paso Robles, CA 93447

Telephone: (800) 350-2223 Fax: (805) 238-4201

## P/N: 50-3703

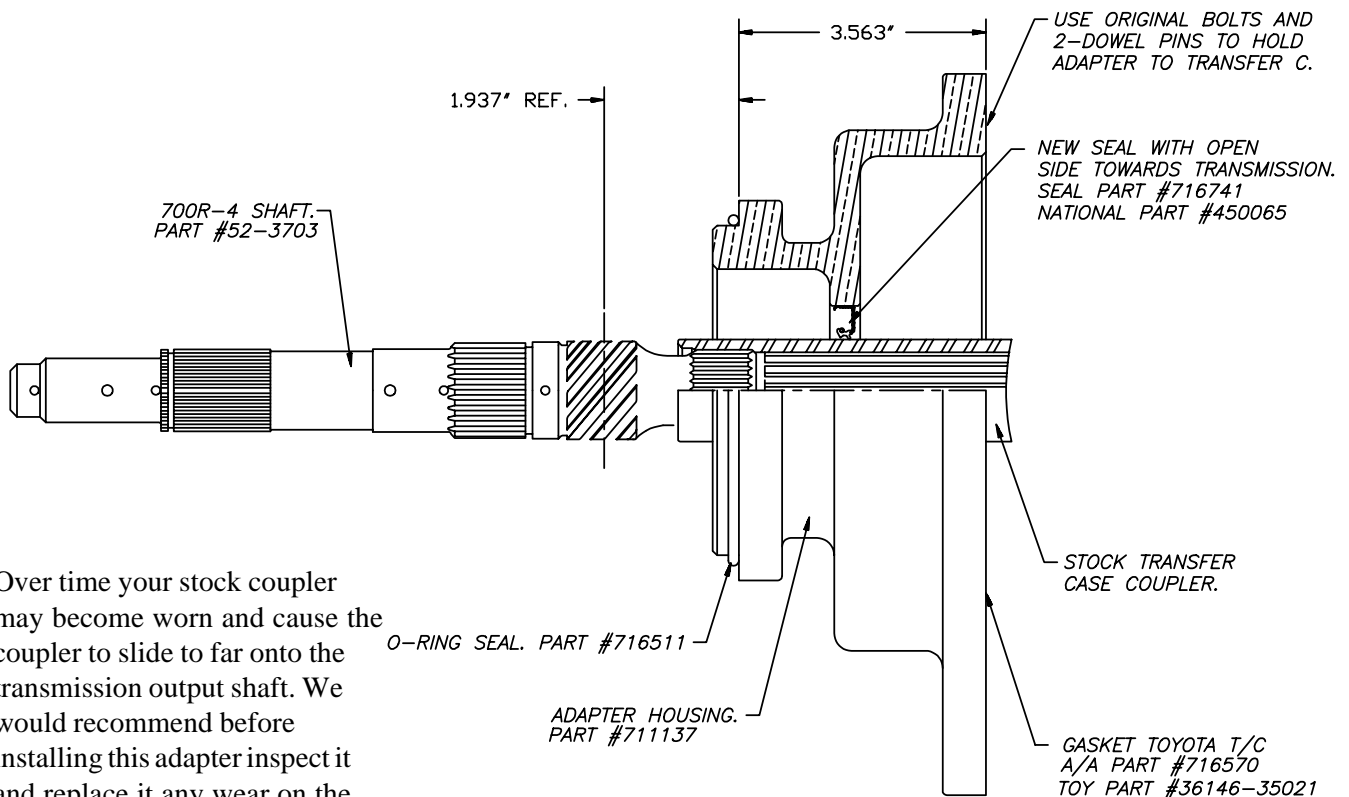
New Item: (1994)

PAGE 3 OF 3

Page Rev. Date: 09-21-15

## 700R-4 TO TOYOTA 4WD T/C 26T INPUT 1987 & UP TOYOTA TRUCK 4WD VEHICLES

**TRANSMISSION CASE LENGTH: 23.375"**



Over time your stock coupler may become worn and cause the coupler to slide to far onto the transmission output shaft. We would recommend before installing this adapter inspect it and replace it any wear on the coupler is found.

### NOTES:

1. BEFORE ASSEMBLING THE 700R-4 SHAFT INTO THE TRANSMISSION, YOU MUST VERIFY THE 26 SPLINE SHAFT INTO THE TRANSFER CASE SLEEVE. SOME MODELS MAY HAVE 23 SPLINES.
2. THIS ADAPTER KIT IS FOR TRANSFER CASES INSTALLED ON TOYOTA TRUCKS NOVEMBER 1987 & NEWER THAT HAD THE FACTORY TOYOTA V-6 ENGINES.

**SPECIAL NOTE:** The components packaged in this kit have been assembled and machined for specific type of conversions. Modifications to any of the components will void any possible warranty or return privileges. If you do not fully understand modifications or changes that will be required to complete your conversion, we strongly recommend that you contact our sales department for more information. This instruction sheet is only to be used for the assembly of Advance Adapter components. We recommend that a service manual pertaining to your vehicle be obtained for specific torque values, wiring diagrams and other related equipment. These manuals are normally available at automotive dealerships and parts stores.