



P.O. Box 247, 4320 Aerotech Center Way  
Paso Robles, CA 93447  
Telephone: (800) 350-2223 Fax: (805) 238-4201  
PAGE 1 OF 3 Page Rev. Date: 03-22-18  
P/N: 50-9810

## GM TRUCK 4WD 4SP SM465 10 SPL. JEEP DANA 300 T/C

### KIT CONSISTS OF:

No.	Qty	Part No.	Description
1.	1	51-9807	CASTING (3.500" Long)
2.	1	52-9810	DANA 300 INPUT SPUD SHAFT W/10T INTERNAL
3.	1	716308	NEW BEARING FOR DANA 300 BRG. RETAINER
4.	1	716515	GASKET
5.	1	716517	GASKET
6.	1	716749	NATIONAL SEAL (#471870)
7.	1	723701	3/8"-16 HEX HEAD NUT
8.	14	723704	3/8" LOCK WASHER PLT.
9.	1	723711	STUD BOLT 3/8"-16 x 2"
10.	12	723723	H.H.C.S. 3/8"-16 x 1-1/2"
11.	1	723740	S.H.C.S. 3/8"-16 x 1-1/2"

### PLEASE NOTE THE FOLLOWING:

Crossmember mount 716088 is the best support to be used with this casting.

**Note: Part No. 716021 crossmember mount should not be used with this adapter.**

This adapter kit has an overall assembled length of 15-1/2". This length will be very compatible when replacing the T4, T5 or SR4 transmissions. If using this transmission with the Jeep 6 cylinder, you will need to use Advance Adapters bellhousing No. 712571. This adapter could be used with V8 conversions and will require driveshaft modifications.

**SPECIAL NOTE:** The components packaged in this kit have been assembled and machined for specific type of conversions. Modifications to any of the components will void any possible warranty or return privileges. If you do not fully understand modifications or changes that will be required to complete your conversion, we strongly recommend that you contact our sales department for more information. This instruction sheet is only to be used for the assembly of Advance Adapter components. We recommend that a service manual pertaining to your vehicle be obtained for specific torque values, wiring diagrams and other related equipment. These manuals are normally available at automotive dealerships and parts stores.



P.O. Box 247, 4320 Aerotech Center Way  
Paso Robles, CA 93447  
Telephone: (800) 350-2223 Fax: (805) 238-4201  
PAGE 2 OF 3 Page Rev. Date: 03-22-18  
P/N: 50-9810

## GM TRUCK 4WD 4SP SM465 10 SPL. JEEP DANA 300 T/C

### GM & CHEVY SM465 4 SPEEDS 1968 & UP:

This transmission can be identified by a case length of 12". The casting numbers on the case should be GM465452, 6273212 or 3901127. The top shift cover casting number should be GM3901131. The P.T.O. opening is available on both sides of the main case. This transmission has a non-synchro first gear. The gear ratios for this transmission are as follows:

First Gear.....	6.56	Fourth Gear....	Direct
Second Gear.....	3.58	Reverse .....	6.09
Third Gear.....	1.70		

In order to use this transmission with our kits, you must make sure that you have the proper output shaft from the original 4 speed transmission to couple to the new Advance adapter. Currently, we manufacture the adapters for both 35 spline and 10 spline output shafts. This kit uses a 4WD 10 spline output shaft. **Make sure that the spud shaft and the main shaft do not bottom out causing interference and eventual bearing failure.**

The spud shaft will need to be installed into your Dana 300 transfer case. You will need to remove the 6 Allen head screws on the Aluminum input retainer. Locate the two slots on the retainer to pry the retainer out of the transfer case. The input shaft and gear will also come out as you do this. Once the retainer, shaft and gear are removed from the transfer case, you will have to remove the snap ring that holds the gear on the input shaft. Once the gear is removed, you should have access to the snap ring that holds the bearing and shaft into the retainer. Once this snap ring is removed, the shaft and bearing will be able to be pressed out. Remove the stock seal that is in the retainer.

At this time, you will need to press the new bearing and input shaft together. First install the new seal into the retainer, and then the shaft and bearing. Retain this with your stock snap ring. Slip the Dana 300 gear on the new shaft and reuse the stock snap ring to retain the gear.

This assembly is now ready to be reinstalled into your Dana 300 case. Make sure the pocket needle bearing pilots the new Advance Adapters input shaft into place. R.T.V. blue silicon should be used to seal the aluminum retainer to the Dana 300 case. Refasten the 6 Allen head bolts. At this time, you should be able to bolt the SM465 to the Dana 300 transfer case. If for any reason the two bolt surfaces do not slide together, **DO NOT FORCE OR PULL TOGETHER** with the bolts. If you have any questions, please call 1-800-350-2223, for technical assistance.

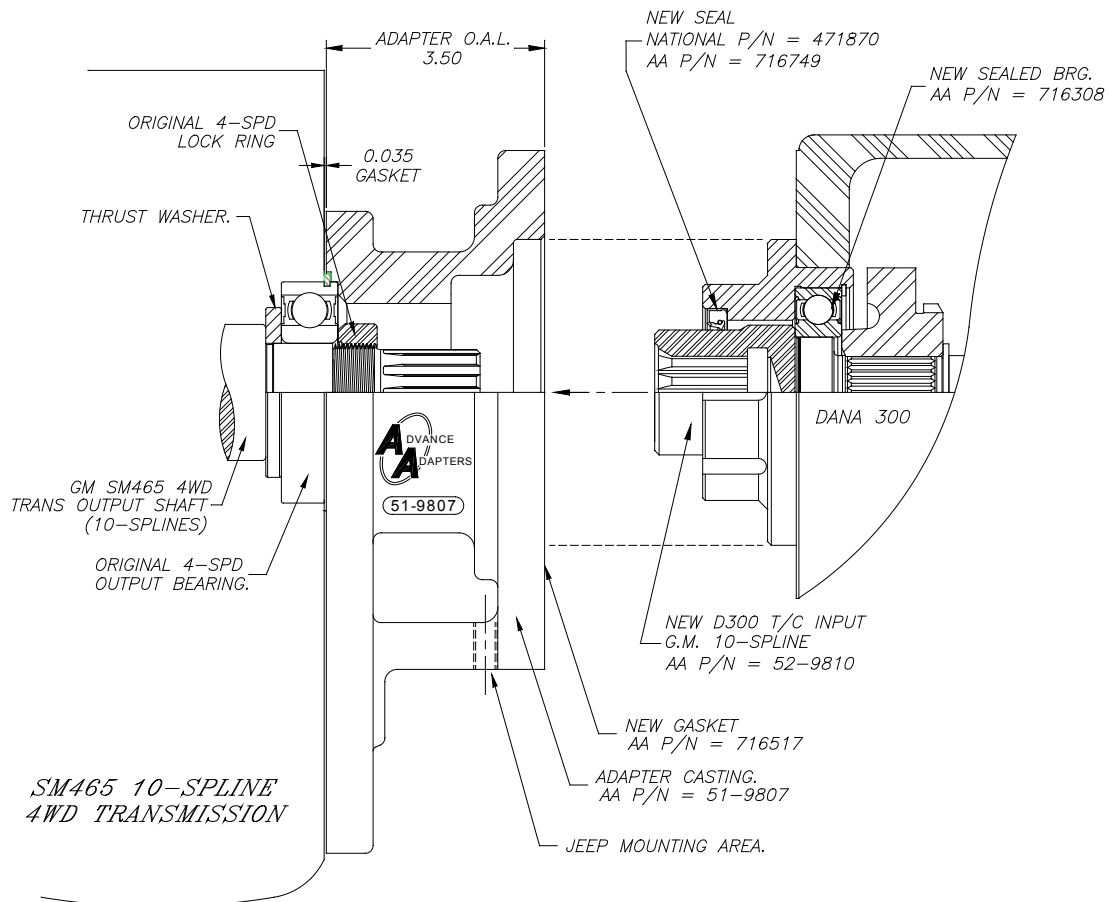
The adapter plate that we have furnished for your new transmission has a special pocket that has been machined into the transmission side for clearance over the reverse counter shaft. Make sure that the counter shaft in the transmission is rotated for proper engagement into the new adapter housing.

The right side of the main case will need to be ground off for clearance of the front output yoke on certain installation. We recommend a trial fit with your transfer case and front output yoke so that any modifications that may be required can be done before final installation. This is a good time to set up the shifter linkage for the transfer case controls.

Make sure that the adapter fits flush against the back of the transmission and indexes properly over the two bearings. You must use the gasket provided between the adapter housing and transfer case. Also, the transmission has a web on the upper rear passenger side that will need to be ground down for the shift pivot rod of the Dana 300 transfer case. This will also be necessary before final installation.

**SPECIAL NOTE:** The components packaged in this kit have been assembled and machined for specific type of conversions. Modifications to any of the components will void any possible warranty or return privileges. If you do not fully understand modifications or changes that will be required to complete your conversion, we strongly recommend that you contact our sales department for more information. This instruction sheet is only to be used for the assembly of Advance Adapter components. We recommend that a service manual pertaining to your vehicle be obtained for specific torque values, wiring diagrams and other related equipment. These manuals are normally available at automotive dealerships and parts stores.

**GM TRUCK 4WD 4SP SM465 10 SPL.  
JEEP DANA 300 T/C**



**SPECIAL NOTE:** The components packaged in this kit have been assembled and machined for specific type of conversions. Modifications to any of the components will void any possible warranty or return privileges. If you do not fully understand modifications or changes that will be required to complete your conversion, we strongly recommend that you contact our sales department for more information. This instruction sheet is only to be used for the assembly of Advance Adapter components. We recommend that a service manual pertaining to your vehicle be obtained for specific torque values, wiring diagrams and other related equipment. These manuals are normally available at automotive dealerships and parts stores.