

GM NV4500 1992-95 TO CHEVY TRUCK BELL- HOUSING HYDRAULIC LINKAGE

KIT CONSISTS OF:

No.	Qty	Part No.	Description
1.	1	712577-BLK	ADVANCE ADAPTERS BELLHOUSING
2.	1	712548-PLT	DUST COVER PLATE
3.	1	712547-B	DASH 4 HYDRALIC HOSE 42"
5.	2	712547-D	MASTER CYLINDER FITTING
6.	2	712547-E	CRUSH WASHER FOR MASTER & SLAVE CYLINDER
7.	1 KIT	715535	GM HYD. SLAVE BRACKET
7.	1	716170	GM PILOT BUSHING
8.	1	716176	GM RELEASE ARM
9.	1	716176SC	SPRING CLIP FOR RELEASE ARM
10.	1	716180	BALL PIVOT
11.	1	716332	RUBBER BOOT
12.	4	723103	5/16 LOCK WASHER
13.	4	723123	5/16"-18 x 1/2" H.H.C.S.
14.	6	723722	3/8"-16 x 1-1/4" H.H.C.S.
15.	2	723730	3/8"-16 x 1-1/4" S.H.C.S.
16.	4	724303	7/16" LOCK WASHER
17.	4	724308	7/16"-14 x 1-3/4" H.H.C.S.



INSTALLATION INSTRUCTIONS:

NOTE: This kit is designed for replacing stock bellhousing on 1992-95 2wd Chevy truck with gas engine.

*stock 4WD trucks will have front driveshaft interference with bellhousing

*Designed for use with 11" clutch. Depending on manufacture of clutch 12" may fit always test fit bellhousing before assembly for clutch clearance.

*6.2/6.5L Diesel will require one piece solid flywheel (will not work on dual mass flywheel) and starter pocket may require grinding for starter clearance.

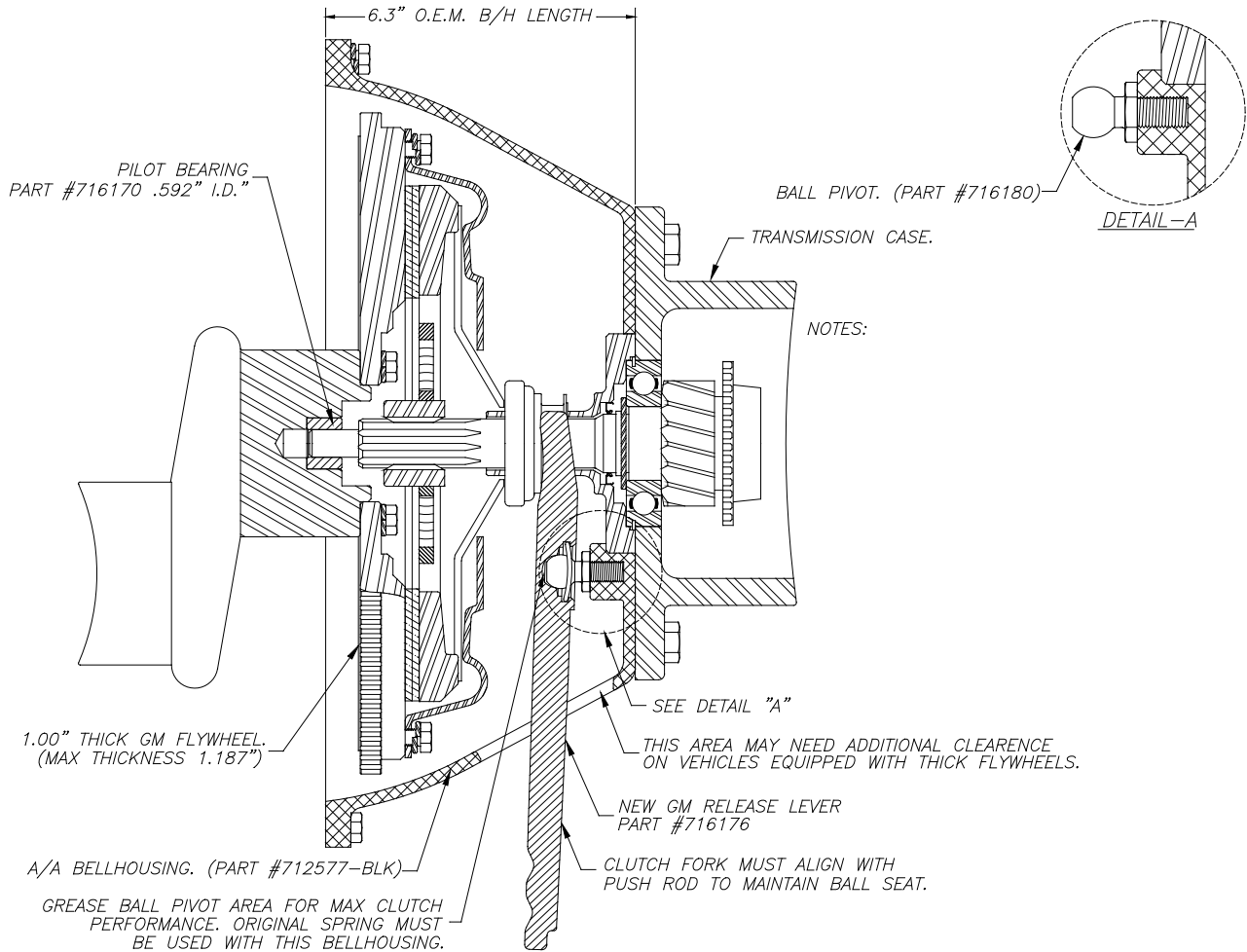
The new pivot ball needs to be installed into the bellhousing. Apply blue Loctite to the threads and torque to 40-45 ft-lbs. The clutch fork will need the spring clip installed; a pair of needle nose pliers works well. Once the spring clip is installed, apply grease to the spring and socket of the fork. *Note: Clutch fork must be installed into the bellhousing before bolting to the engine.

Place the fork over the pivot ball, centering the spring clip. With a dead blow hammer, hit the back side of the fork using ample force, directly perpendicular to the pivot ball (2 or 3 times may be required). Fork should move free, with slight resistance. If not, repeat the force with the dead blow hammer. See photos above

1. Bolt transmission to the Advance Adapters bellhousing.
2. Install flywheel, pilot bearing, and clutch assembly. Refer to a service manual as needed.
3. Install transmission / bellhousing assembly into vehicle.

SPECIAL NOTE: The components packaged in this kit have been assembled and machined for specific type of conversions. Modifications to any of the components will void any possible warranty or return privileges. If you do not fully understand modifications or changes that will be required to complete your conversion, we strongly recommend that you contact our sales department for more information. This instruction sheet is only to be used for the assembly of Advance Adapter components. We recommend that a service manual pertaining to your vehicle be obtained for specific torque values, wiring diagrams and other related equipment. These manuals are normally available at automotive dealerships and parts stores.

GM NV4500 1992-95 TO CHEVY TRUCK BELL-HOUSING HYDRAULIC LINKAGE



SPECIAL NOTE: The components packaged in this kit have been assembled and machined for specific type of conversions. Modifications to any of the components will void any possible warranty or return privileges. If you do not fully understand modifications or changes that will be required to complete your conversion, we strongly recommend that you contact our sales department for more information. This instruction sheet is only to be used for the assembly of Advance Adapter components. We recommend that a service manual pertaining to your vehicle be obtained for specific torque values, wiring diagrams and other related equipment. These manuals are normally available at automotive dealerships and parts stores.