

4L60E 4WD HEX PATTERN TO ATLAS ADAPTER

KIT CONSISTS OF:

No.	Qty.	Part No.	Description
1.	1	300619	RELUCTOR SENSOR
2.	1	51-0405	4L60E / UNIVERSAL ADAPTER
2.	1	51-9111	ADAPTER- 700R4 TO ATLAS- 2.5
4.	1	716074	RELUCTOR RING CLAMP RING
5.	1	716079	22mm PLUG
6.	1	716511	GM AUTO TRANSMISSION O RING
7.	1	716757	NATIONAL SEAL
8.	4	720011	NUT- 10MM X 1.50 zinc
9.	4	720061	10mm X 1.5 50mm LONG STUD BOLT

Note: We have found some Chevy Performance crate 4L70E transmissions have a larger diameter transmission output shaft where the VSS Tone Ring clamps on. If you encounter this please contact Advance Adapters.

In 1996, GM produced a newer version of its electronically controlled 4L60E. This 4L60E transmission is 21-1/2" long, and has a removable bellhousing. It has a hex bolt pattern on the output side of the transmission, similar to a TH400.

The 50-0405E kit was designed to make this style of 4L60E look just like a 700R. By incorporating a new clamp-on reductor ring and sensor on this adapter, a 40 pulse per output shaft revolution signal is generated for the drivetrain control module. This adapter comes with a new clamp-on reductor ring that should be installed on the 4L60E 4WD output shaft. We have provided two reductor sensor locations to choose from in the adapter. The hole not being used will need to be plugged with the plug provided.

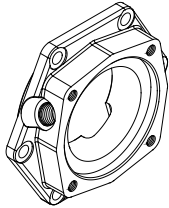
Before tightening this clamp, trial fit the 51-0405 adapter plate onto the back of the 4L60E transmission. With the adapter set on the back of the transmission, install the 300619 reductor sensor into the adapter casting. The 300619 sensor should line up over the teeth of the reductor clamp. When you obtain this location, remove the adapter housing, making sure not to disturb the position of the clamp on the shaft. With the clamp now exposed, tighten the set screws on the clamp. *Loctite on these set screws is recommended.*



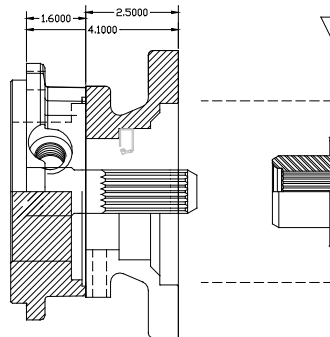
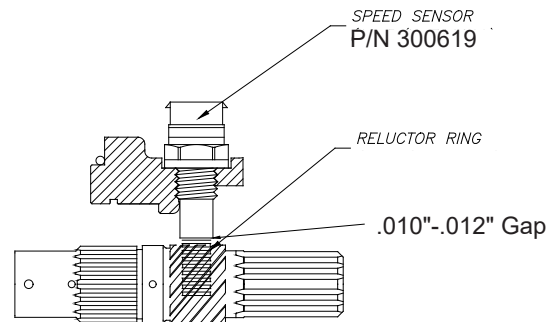
Trial fit the 51-0405 adapter and 300619 sensor back on the transmission and make sure the reductor ring teeth and sensor still line up properly. *RTV Blue Silicone* should be used to seal the 51-0405 adapter to your 4L60E transmission. Screw the 300619 sensor completely into the 51-0405 casting. With a feeler gauge, check the gap between the sensor and the reductor ring. This gap should be around 0.010" to 0.012". Once 0.010" to 0.012" clearance is obtained, loc-tite the sensor into position.

SPECIAL NOTE: The components packaged in this kit have been assembled and machined for specific types of conversions. Modifications to any of the components will void any possible warranty or return privileges. If you do not fully understand the modifications or changes that will be required to complete your conversion, we strongly recommend that you contact our sales department for more information. This Instruction Sheet is only to be used for the assembly of Advance Adapter components. We recommend that a service manual pertaining to your vehicle be obtained for specific torque values, wiring diagrams and other related equipment. These manuals are normally available at automotive dealerships and parts stores.

4L60E 4WD HEX PATTERN TO ATLAS ADAPTER



Sensor note: The sensor in this kit was changed in October 2005. This sensor will match up with the GM pigtail P/N 12162193 or Carquest P/N 57-4502 and NAPA, TSC200. The old sensor used in earlier kits matches up to GM pigtail P/N 12085498.



This casting couples a 700R to an Atlas transfer case.

The Atlas comes with studs that will be used for mounting to the adapter. This adapter has two holes drilled and tapped to use a stock GM transmission rubber support.

OPTIONAL ITEMS:

If you are looking for another option than the stock rubber mount, we recommend our 716055 transmission mount. This mount uses the transfer case studs that come through the adapter. This mount is sold separately.



SPECIAL NOTE: The components packaged in this kit have been assembled and machined for specific types of conversions. Modifications to any of the components will void any possible warranty or return privileges. If you do not fully understand the modifications or changes that will be required to complete your conversion, we strongly recommend that you contact our sales department for more information. This Instruction Sheet is only to be used for the assembly of Advance Adapter components. We recommend that a service manual pertaining to your vehicle be obtained for specific torque values, wiring diagrams and other related equipment. These manuals are normally available at automotive dealerships and parts stores.