



4320 Aerotech Center Way
Paso Robles, CA 93447
Telephone: (800) 350-2223 Fax: (805) 238-4201
PAGE 1 OF 3 Page Rev. Date: 03-12-20
P/N: 50-6924

4L60E TO FORD N/P TRANSFER CASE WITH 31 SPLINE

KIT CONSISTS OF:

No.	Qty	Part No.	Description
1.	1	51-0405	4L60E / UNIVERSAL ADAPTER
2.	1	51-6904	CASTING (Ref: modified 51-6300) (Assembled by AA)
3.	1	52-6900	SHORT SHAFT 700R-4 (Ref: 711369)
4.	1	52-6902	FORD SPUD SHAFT (27 Inside x 31 Outside) (Ref: 711369-F) (Assembled by AA)
5.	1	716072	RELUCTOR RING CLAMP RING (One piece reluctor, bolt torque 10 ft-lbs.)
6.	1	716079	22mm PLUG
7.	1	716082	700R PLASTIC WASHER
8.	1	716308	BEARING (#6209) (Assembled by AA)
9.	1	716450	SNAP RING (Assembled by AA)
10.	1	716456	SNAP RING (Assembled by AA)
11.	1	716511	"O" RING
12.	1	716517	GASKET
13.	4	720028	S.H.C.S. 10mm-1.5 x 35mm
14.	1	300619	RELUCTOR SENSOR

In 1996, GM produced a newer version of its electronically controlled 4L60E. This 4L60E transmission is 21-1/2" long, and has a removable bellhousing. It has a hex bolt pattern on the output side of the transmission, similar to a TH400.

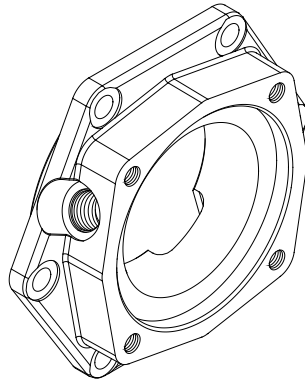
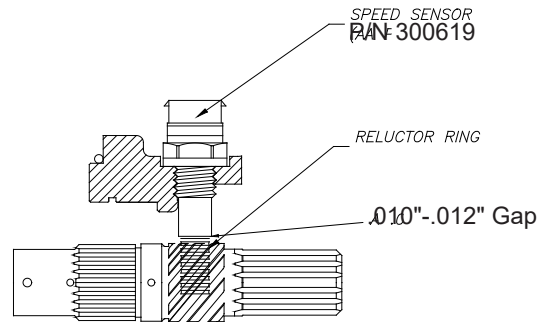
Before tightening this clamp, trial fit the 51-0405 adapter plate onto the back of the 4L60E transmission. With the adapter set on the back of the transmission, install the 300619 reluctor sensor into the adapter casting. The 300619 sensor should line up over the teeth of the reluctor clamp. When you obtain this location, remove the adapter housing, making sure not to disturb the position of the clamp on the shaft. With the clamp now exposed, tighten the set screws on the clamp. *Loctite on these set screws is recommended.*

Trial fit the 51-0405 adapter and 300619 sensor back on the transmission and make sure the reluctor ring teeth and sensor still line up properly. *RTV Blue Silicone* should be used to seal the 51-0405 adapter to your 4L60E transmission. Screw the 300619 sensor completely into the 51-0405 casting. With a feeler gauge, check the gap between the sensor and the reluctor ring. This gap should be around 0.010" to 0.012". Once 0.010" to 0.012" clearance is obtained, loc-tite the sensor into position.

SPECIAL NOTE: The components packaged in this kit have been assembled and machined for specific type of conversions. Modifications to any of the components will void any possible warranty or return privileges. If you do not fully understand modifications or changes that will be required to complete your conversion, we strongly recommend that you contact our sales department for more information. This instruction sheet is only to be used for the assembly of Advance Adapter components. We recommend that a service manual pertaining to your vehicle be obtained for specific torque values, wiring diagrams and other related equipment. These manuals are normally available at automotive dealerships and parts stores.

4L60E TO FORD N/P TRANSFER CASE WITH 31 SPLINE

You are now ready to bolt your conversion adapter to the 51-0405 kit. **NOTE: On a few applications, customers have not positioned the clamp in the incorrect position which has caused interference with the spud shaft in the conversion adapter. If you try bolting the conversion adapter up to the 51-0405 and find interference, the spud shaft may be hitting the clamp on the reluctor.**

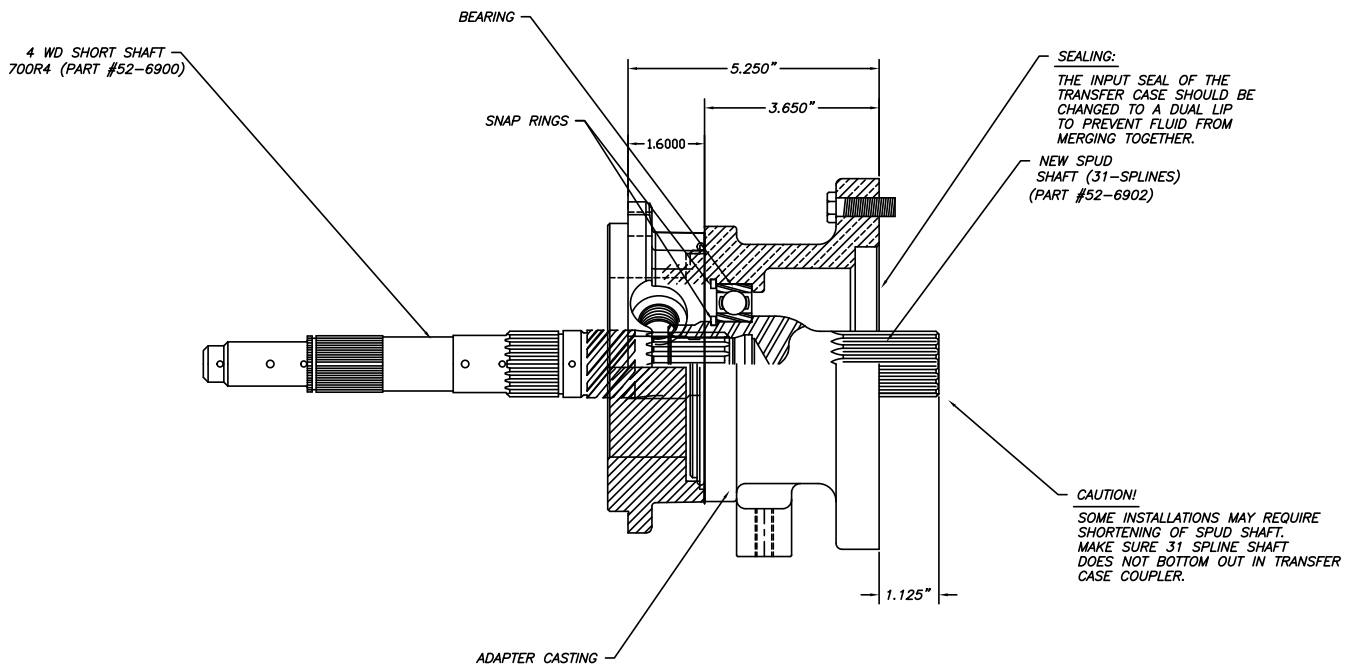


SPECIAL NOTE: The components packaged in this kit have been assembled and machined for specific type of conversions. Modifications to any of the components will void any possible warranty or return privileges. If you do not fully understand modifications or changes that will be required to complete your conversion, we strongly recommend that you contact our sales department for more information. This instruction sheet is only to be used for the assembly of Advance Adapter components. We recommend that a service manual pertaining to your vehicle be obtained for specific torque values, wiring diagrams and other related equipment. These manuals are normally available at automotive dealerships and parts stores.

4L60E TO FORD N/P TRANSFER CASE WITH 31 SPLINE

NOTES:

1. The transmission must be equipped with the special Advance Adapters output shaft.
2. The transfer case linkage will need to be fabricated for use with this adapter.
3. On the front side of the transfer case, the input sleeve has an oil seal to prevent fluid transfer between transmission and transfer case. We would recommend using a dual-lip seal.
4. The front side of the transfer case will need to have the dowel pin removed in order to accept the new adapter housing.
5. The output shaft of the new adapter assembly may require shortening on certain applications. Test fit the adapter to the transfer case and make sure that the new 31 spline shaft does not bottom out inside the 31 spline coupler.
6. If using this kit on a NP205 transfer case, the adapter will need to be modified for shifter linkage clearance.



SPECIAL NOTE: The components packaged in this kit have been assembled and machined for specific type of conversions. Modifications to any of the components will void any possible warranty or return privileges. If you do not fully understand modifications or changes that will be required to complete your conversion, we strongly recommend that you contact our sales department for more information. This instruction sheet is only to be used for the assembly of Advance Adapter components. We recommend that a service manual pertaining to your vehicle be obtained for specific torque values, wiring diagrams and other related equipment. These manuals are normally available at automotive dealerships and parts stores.