



P.O. Box 247, 4320 Aerotech Center Way
Paso Robles, CA 93447
Telephone: (800) 350-2223 Fax: (805) 238-4201
PAGE 1 OF 4 Page Rev. Date: 02-05-18
P/N: 50-0210

NEW VENTURE 4500 GM 5 SPEED TO JEEP DANA 20 6 SPLINE T/C

KIT CONSISTS OF:

| No. | Qty. | Part No. | Description |
|-----|------|----------|---|
| 1. | 1 | 51-0212 | ADAPTER CASTING 5.875" LONG |
| 2. | 1 | 52-0210 | 6 SPLINE SPUD SHAFT (31T INTERNAL) |
| 3. | 1 | 716144 | SPECIAL BEARING RETAINER FOR JEEP (<i>Large Hole</i>) |
| 4. | 1 | 716302 | SEALED BEARING |
| 5. | 1 | 716455 | SNAP RING |
| 6. | 1 | 716462 | SET COLLAR |
| 7. | 1 | 716568 | GASKET |
| 8. | 1 | 716721 | NATIONAL SEAL #3095 |
| 9. | 1 | 728701 | NYLON NUT |

NOTE:

This adapter kit has an overall transmission assembled length of 18.250". This transmission kit must be used with a 4WD GM transmission.

The length of this adapter will make it nearly impossible to use this transmission with the CJ5 models. The only exception would be a 4 cylinder engine or V6 engine that is set to the very forward position of the engine compartment. It would not be recommended to have a suspension lift, since the rear driveline angle would not be compatible. Due to the size of the transmission, a body lift would be almost mandatory. We prefer that these adapters only be used in the CJ7 vehicles or wag-ons and trucks.

SPECIAL NOTE:

The output gear and nut assembly must use original 7/8" washer to secure gear properly.

SPECIAL NOTE: The components packaged in this kit have been assembled and machined for specific type of conversions. Modifications to any of the components will void any possible warranty or return privileges. If you do not fully understand modifications or changes that will be required to complete your conversion, we strongly recommend that you contact our sales department for more information. This instruction sheet is only to be used for the assembly of Advance Adapter components. We recommend that a service manual pertaining to your vehicle be obtained for specific torque values, wiring diagrams and other related equipment. These manuals are normally available at automotive dealerships and parts stores.



P.O. Box 247, 4320 Aerotech Center Way
Paso Robles, CA 93447
Telephone: (800) 350-2223 Fax: (805) 238-4201
PAGE 2 OF 4 Page Rev. Date: 02-05-18
P/N: 50-0210

NEW VENTURE 4500 GM 5 SPEED TO JEEP DANA 20 6 SPLINE T/C

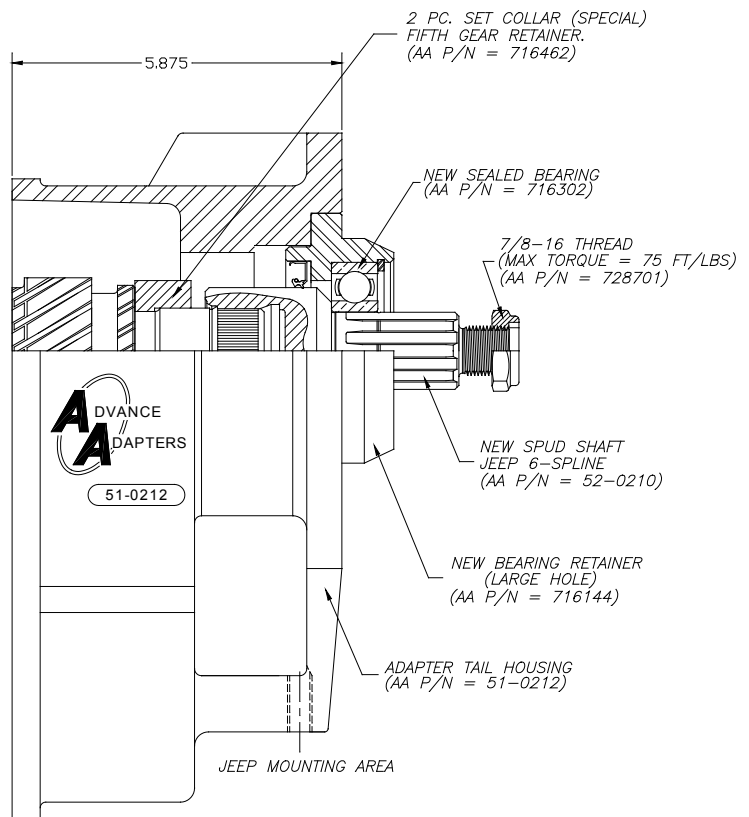
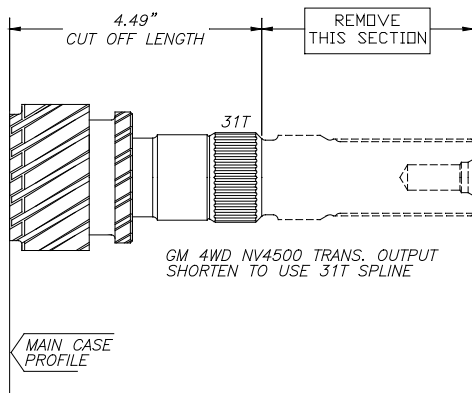
NOTE:

1. This adapter is designed for exclusive use of the 4WD General Motors version of the New Venture Model 4500 transmission. You must use this transmission due to the length and spline size of the output shaft. The shaft must be shortened to the 4.498" cutoff length. In order to cut the shaft off, you will need to remove the tailhousing. The shaft can be cutoff using an abrasive cutoff saw or a skill saw equipped with a special metal cutting blade. Be sure to use safety glasses during this procedure. You must remove the harmonic balancer and install the 2 piece set collar.
2. The assembly of the adapter plate to the transfer case should be very much like the originally transmission that is being replaced. A new nylon nut is provided for holding the output gear in position inside the transfer case.
3. The alignment between the new adapter housing and transfer case must be performed by the bearing retainer that has been included with the adapter. A new sealed bearing has been provided for keeping the two fluids separated. The bearing retainer is available only for large hole transfer cases. Make sure that you have the proper bearing retainer before assembly is completed. ***(Note: If you have a small hole transfer case, please contact the number listed above for more information.)***
4. The transfer case shift controls will need to be modified for use with the new transmission.

SPECIAL NOTE: The components packaged in this kit have been assembled and machined for specific type of conversions. Modifications to any of the components will void any possible warranty or return privileges. If you do not fully understand modifications or changes that will be required to complete your conversion, we strongly recommend that you contact our sales department for more information. This instruction sheet is only to be used for the assembly of Advance Adapter components. We recommend that a service manual pertaining to your vehicle be obtained for specific torque values, wiring diagrams and other related equipment. These manuals are normally available at automotive dealerships and parts stores.

NEW VENTURE 4500 GM 5 SPEED TO JEEP DANA 20 6 SPLINE T/C

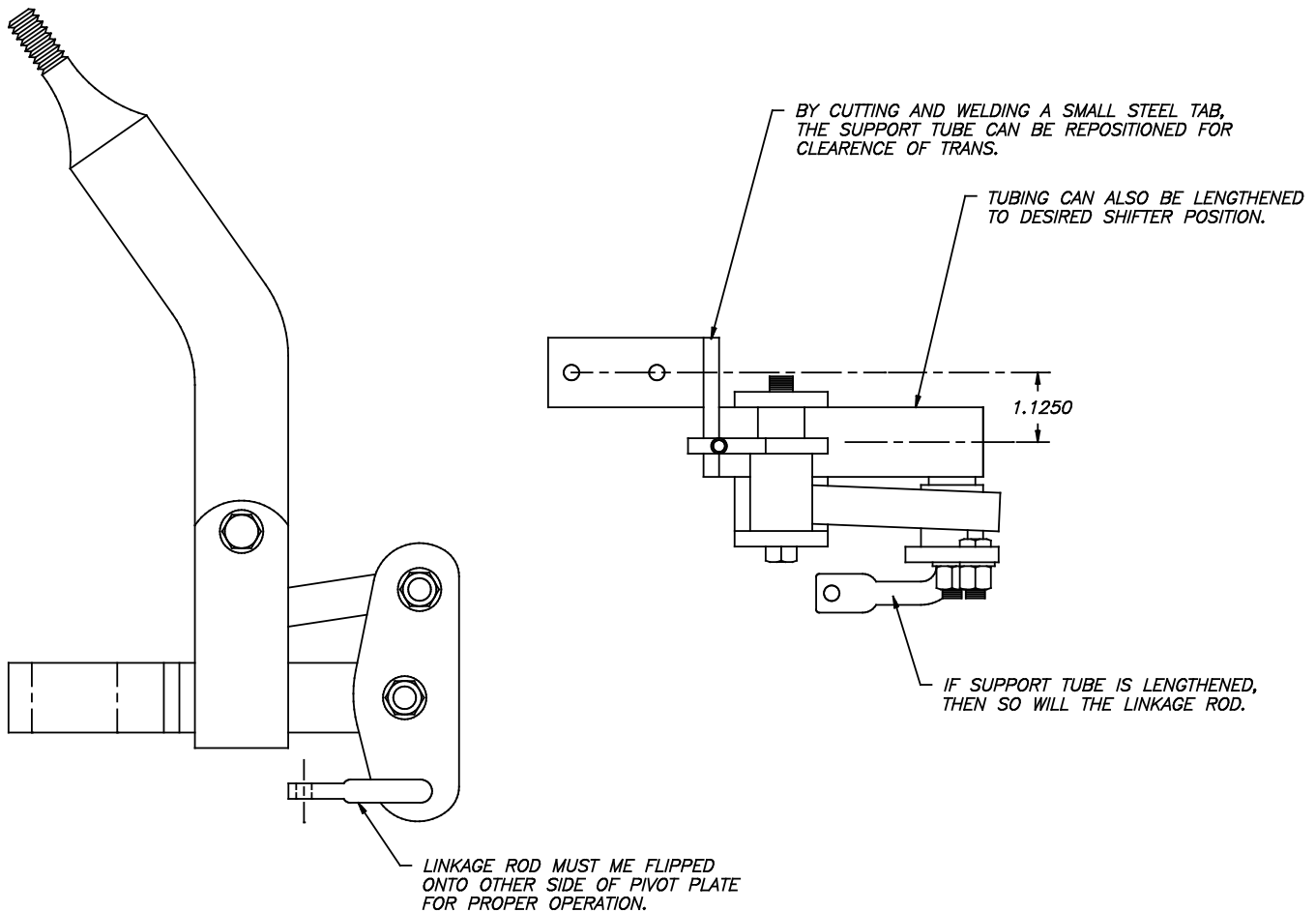
TRANSMISSION ASSEMBLY O.A.L. = 18-1/4"



NOTE: This kit can only be used with GM 4WD New Venture 5-speed transmissions.

SPECIAL NOTE: The components packaged in this kit have been assembled and machined for specific type of conversions. Modifications to any of the components will void any possible warranty or return privileges. If you do not fully understand modifications or changes that will be required to complete your conversion, we strongly recommend that you contact our sales department for more information. This instruction sheet is only to be used for the assembly of Advance Adapter components. We recommend that a service manual pertaining to your vehicle be obtained for specific torque values, wiring diagrams and other related equipment. These manuals are normally available at automotive dealerships and parts stores.

NEW VENTURE 4500 GM 5 SPEED TO JEEP DANA 20 6 SPLINE T/C



TRANSFER CASE LINKAGE MODIFICATIONS

SPECIAL NOTE: The components packaged in this kit have been assembled and machined for specific type of conversions. Modifications to any of the components will void any possible warranty or return privileges. If you do not fully understand modifications or changes that will be required to complete your conversion, we strongly recommend that you contact our sales department for more information. This instruction sheet is only to be used for the assembly of Advance Adapter components. We recommend that a service manual pertaining to your vehicle be obtained for specific torque values, wiring diagrams and other related equipment. These manuals are normally available at automotive dealerships and parts stores.