

ADVANCE ADAPTERS, INC.

P.O. Box 247, 4320 Aerotech Center Way

Paso Robles, CA 93447

Telephone: (800) 350-2223 Fax: (805) 238-4201

P/N: 50-6911

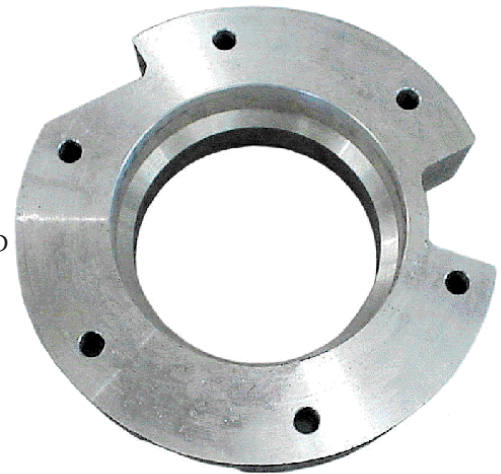
PAGE: 1 OF 1

Page Rev. Date: 03-10-22

GM NV4500 TO GM NP205 CIRCULAR T/C

IN HOUSE INSTRUCTIONS

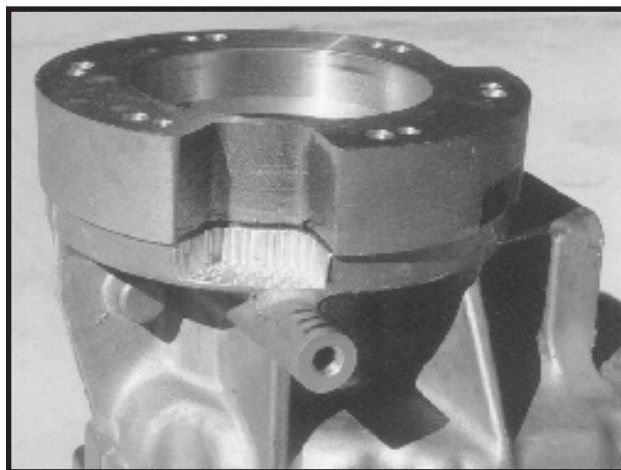
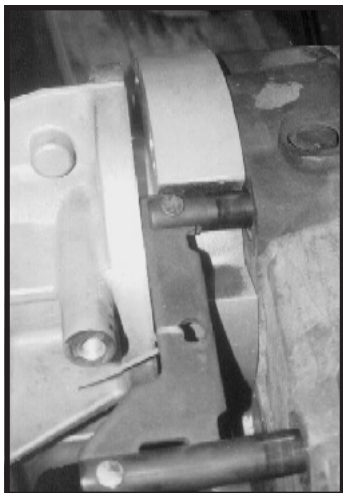
No.	Qty.	Part No.	Description
1.	1	51-6910	GM CIRCULAR 1-5/8" SPACER
2.	6	723704	3/8" LOCKWASHER
3.	6	723703	3/8"-16 NYLON LOCK NUT
4.	6	723712	3/8"-16 x 3-1/2" STUD BOLT
5.	1	715529	BRACKET- LINKAGE NV4500 TO NP205
6.	1	725603	NUT-SERRATED FLANGE 9/16 -12 PLATED (Nut for T/C pivot bolt)



This casting is designed for the NP205 transfer case that used a long stickout input gear. There are a few of our adapters and/or a couple of stock adapters where you will find an output shaft length interference problem with your transfer case input gear. If you are experiencing a length problem, this spacer adapter is the easy fix. It is designed to clear the transfer case shifter linkage and give you the necessary length to avoid shaft interference.

In order to provide clearance for the shift mechanism on the NP205 T/C, you must make a small relief area in the original 4WD tailhousing. If you do not have a milling machine, then you can remove this excess material by using a drill press and drilling numerous holes. The photos on this page illustrate the modifications required.

The transfer case mounting plate, Part No. 715529, mounts to the top cover and provides a hole location for mounting the handle in similar location. The bracket has been manufactured to ways over the years. One has the threads tapped into the bracket and the other uses the 725603 nut.



SPECIAL NOTE: The components packaged in this kit have been assembled and machined for specific types of conversions. Modifications to any of the components will void any possible warranty or return privileges. If you do not fully understand the modifications or changes that will be required to complete your conversion, we strongly recommend that you contact our sales department for more information. This Instruction Sheet is only to be used for the assembly of Advance Adapter components. We recommend that a service manual pertaining to your vehicle be obtained for specific torque vales, wiring diagrams and other related equipment. These manuals are normally available at automotive dealerships and parts stores.