



4320 Aerotech Center Way  
Paso Robles, CA 93447  
Telephone: (800) 350-2223 Fax: (805) 238-4201  
PAGE 1 OF 2      Page Rev. Date: **05-23-16**  
**P/N: 712505**

## JEEP T90 3 SPEED TRANSMISSION TO FORD V8 ENGINES 1965 & UP

### KIT CONSISTS OF:

No.	Qty	Part No.	Description
1.	1	711504	ADAPTER CASTING
2.	1	716172	PILOT BUSHING (.625" I.D.)
3.	1	716706	NATIONAL SEAL #482208
4.	4	723119	S.H.C.S. 5/16"-18 x 1-1/4" LONG
5.	1	761019	BEARING RETAINER
6.	1	JP001	JEEP INSTRUCTION MANUAL

### OPTIONAL ITEMS:

Qty	Part No.	Description
1	716177	CLUTCH REL. ARM
1	716014	T90 INPUT SHAFT

**When replacing a 4 cylinder, it is necessary to purchase the 716014 Input shaft & 6 cylinder Retainer.**

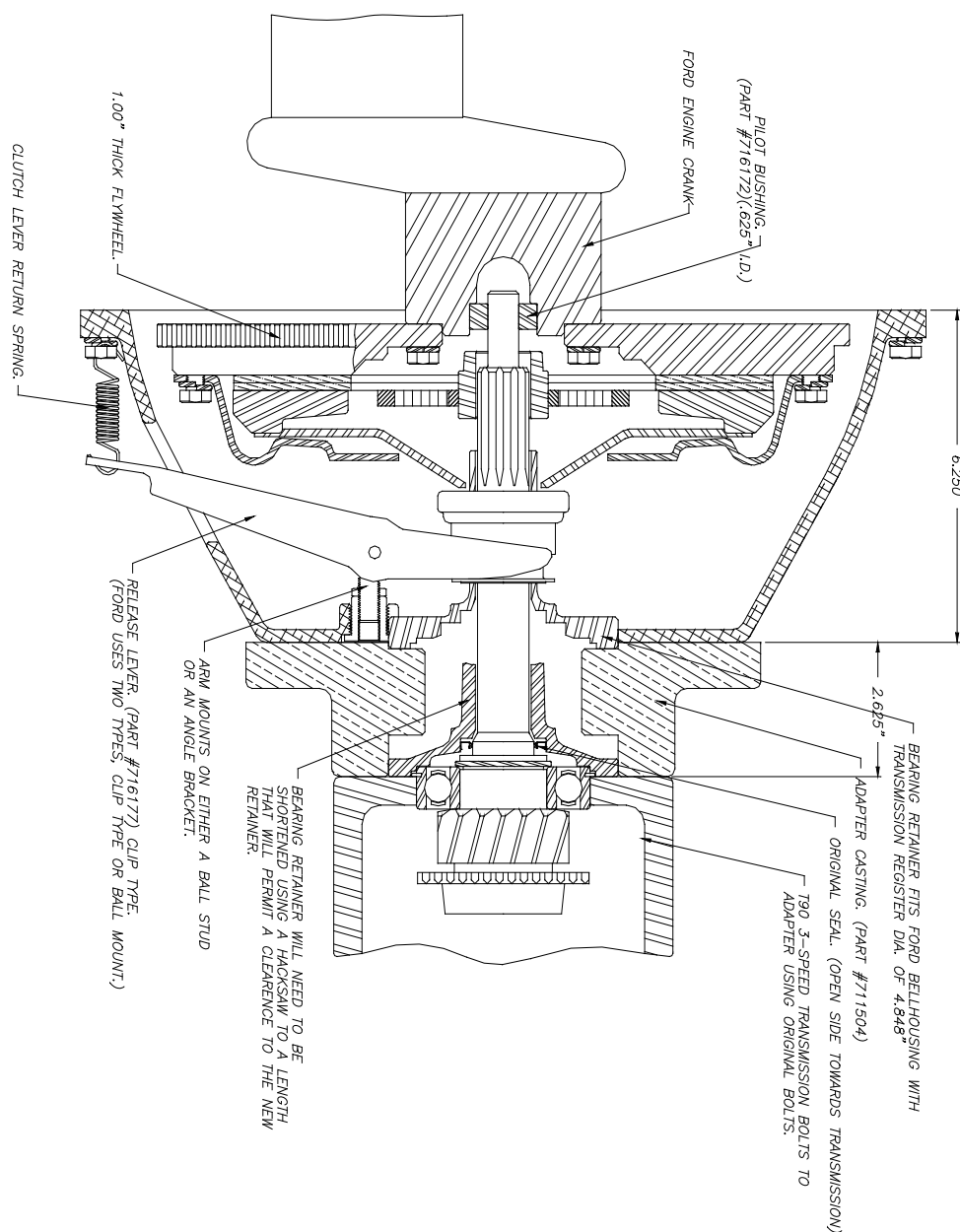
### INSTALLATION INSTRUCTIONS:

When replacing a 4 cylinder engine, a new transmission input shaft, Advance Adapter Part No. 716014, will be required. A new cluster gear, Part No. 716018, is required when replacing a 16 tooth input shaft. Most conversions will require the transfer case to be moved forward in order to obtain a good engine position. This will require driveshaft modifications. The engine should be offset towards the driver's side by approximately 1" in order to allow for driveshaft and starter motor clearance.

1. Install pilot bushing into the engine crank shaft.
2. Remove the bearing retainer from the front of the 3 speed transmission and cut the snout off as illustrated to an overall length of 1-5/8". Remove the seal and install the new seal provided with the kit. The seal must have the open side towards the transmission.
3. The following Ford parts will be necessary:
  - Clutch Release Bearing
  - Clutch Release Lever
  - Pressure Plate
  - Clutch Disc with 1-1/8"-10
  - Flywheel
  - Bellhousing with small index diameter of 4.848"
4. Bolt the new bearing retainer to the front of the adapter housing using the 4 bolts supplied.
5. Bolt the adapter plate to the new bellhousing. The bellhousing must be from a 1965 or newer Ford engine. Early model bell housings are not applicable for use with this kit.
6. Bolt the transmission to the adapter plate using the original bolts.

**SPECIAL NOTE:** The components packaged in this kit have been assembled and machined for specific type of conversions. Modifications to any of the components will void any possible warranty or return privileges. If you do not fully understand modifications or changes that will be required to complete your conversion, we strongly recommend that you contact our sales department for more information. This instruction sheet is only to be used for the assembly of Advance Adapter components. We recommend that a service manual pertaining to your vehicle be obtained for specific torque values, wiring diagrams and other related equipment. These manuals are normally available at automotive dealerships and parts stores.

## JEEP T90 3 SPEED TRANSMISSION TO FORD V8 ENGINES 1965 & UP



**SPECIAL NOTE:** The components packaged in this kit have been assembled and machined for specific type of conversions. Modifications to any of the components will void any possible warranty or return privileges. If you do not fully understand modifications or changes that will be required to complete your conversion, we strongly recommend that you contact our sales department for more information. This instruction sheet is only to be used for the assembly of Advance Adapter components. We recommend that a service manual pertaining to your vehicle be obtained for specific torque values, wiring diagrams and other related equipment. These manuals are normally available at automotive dealerships and parts stores.