

# ADVANCE ADAPTERS INC.

P.O. Box 247, 4320 Aerotech Center Way  
Paso Robles, CA 93447

Telephone: (800) 350-2223 Fax: (805) 238-4201

# P/N: 712512

PAGE 1 OF 2

Page Rev. Date: 11-05-12

## JEEP T18 4 SPEED TRANSMISSION TO CHEVY & BUICK ENGINES

### KIT CONSISTS OF:

No.	Qty	Part No.	Description
1.	1	711511	ADAPTER CASTING
2.	1	716016	TRANSMISSION INPUT SHAFT (T18-17Tooth)
3.	1	716046	BEARING RETAINER
4.	1	716148	PILOT BEARING
5.	1	716724	NATIONAL SEAL #473203
6.	4	723137	S.H.C.S. 5/16"-18 x 7/8"
7.	2	724307	H.H.C.S 7/16"-14 x 1"
8.	2	725010	H.H.C.S. 1/2"-13 x 2" LONG
9.	1	725013	S.H.C.S. 1/2"-13 x 2" LONG
10.	1	725026	F.H.C.S. 1/2"-13 x 1-1/4" LONG
11.	1	JP001	JEEP INSTRUCTION MANUAL

### OPTIONAL ITEMS:

Qty	Part No.	Description
1	716176	CLUTCH REL. ARM

### INSTALLATION INSTRUCTIONS:

When converting this Jeep 4 speed transmission, you must change the transmission input shaft to the new style that has been furnished in this kit.

If this kit is being used on a T18 transmission, then the stock needle bearings will be retained. The T18 transmission also used two sizes of shifter synchronizer rings. If the transmission you have has a synchronizer ring that is too large, you will then be required to purchase P/N T87-D14 from your Border Auto Parts 619-461-0171.

1. Install new shaft.
2. Install pilot bushing into the engine crank shaft.
3. Elongate the top two holes in the transmission case to match the top two holes in the adapter plate.
4. Bolt the bearing retainer to the adapter plate using the 4 bolts supplied.
5. Install the new oil seal with the open side towards the transmission.
6. Place the adapter plate to the bellhousing. Apply RTV silicone to the adapter plate and then index the transmission into the adapter. New bolts have been provided to go through both the transmission and adapter plate and thread into the new bellhousing.
7. The following parts will be necessary:

*Clutch Release Bearing  
Clutch Release Lever  
Pressure Plate  
Clutch Disc with 1-1/16"-10 spline  
Flywheel  
Bellhousing with small index diameter of 4.686"*

**SPECIAL NOTE:** The components packaged in this kit have been assembled and machined for specific type of conversions. Modifications to any of the components will void any possible warranty or return privileges. If you do not fully understand modifications or changes that will be required to complete your conversion, we strongly recommend that you contact our sales department for more information. This instruction sheet is only to be used for the assembly of Advance Adapter components. We recommend that a service manual pertaining to your vehicle be obtained for specific torque values, wiring diagrams and other related equipment. These manuals are normally available at automotive dealerships and parts stores.

# ADVANCE ADAPTERS INC.

P.O. Box 247, 4320 Aerotech Center Way

Paso Robles, CA 93447

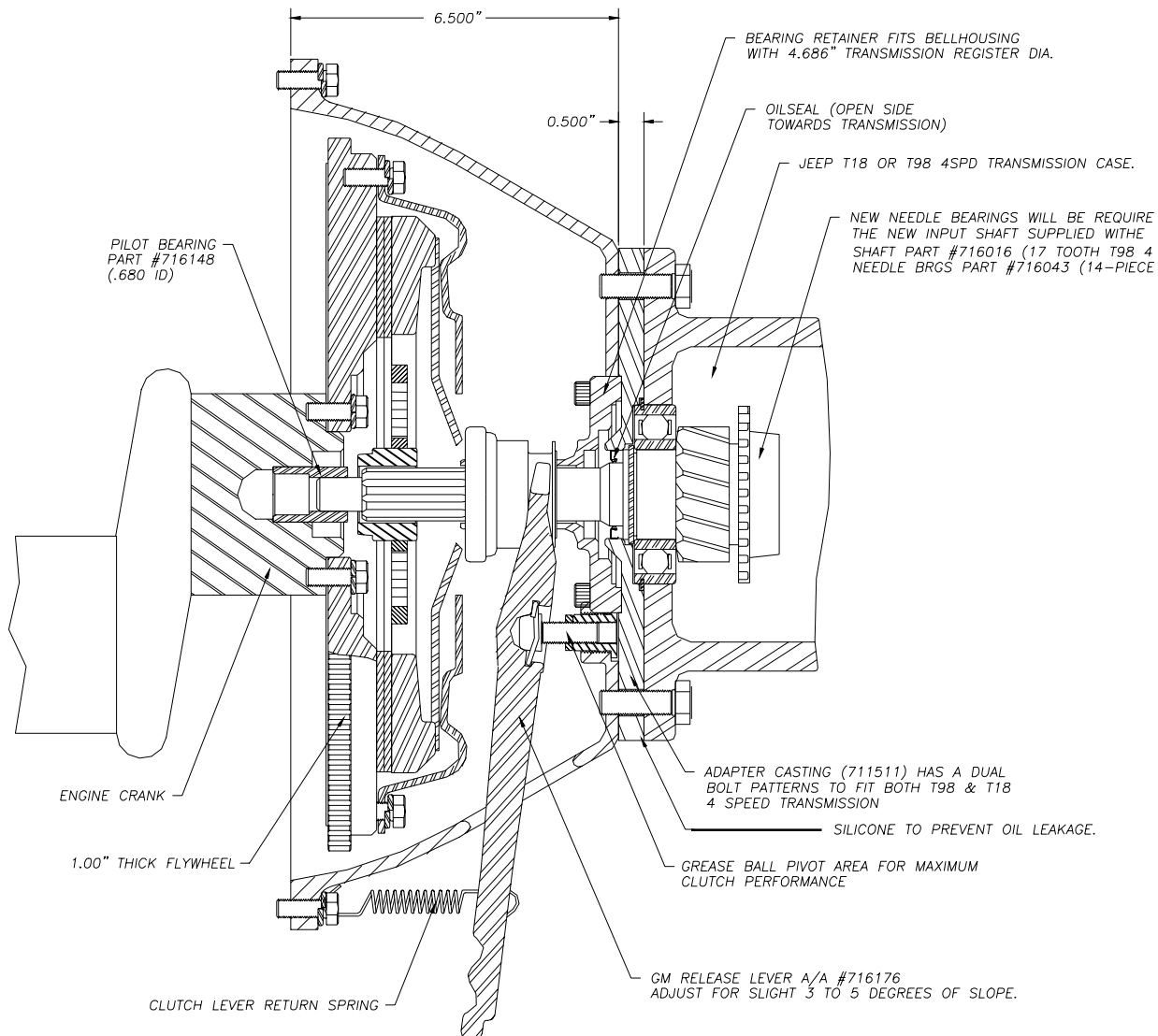
Telephone: (800) 350-2223 Fax: (805) 238-4201

# P/N: 712512

PAGE 2 OF 2

Page Rev. Date: 10-20-10

## JEEP T18 4 SPEED TRANSMISSION TO CHEVY & BUICK ENGINES



**SPECIAL NOTE:** The components packaged in this kit have been assembled and machined for specific type of conversions. Modifications to any of the components will void any possible warranty or return privileges. If you do not fully understand modifications or changes that will be required to complete your conversion, we strongly recommend that you contact our sales department for more information. This instruction sheet is only to be used for the assembly of Advance Adapter components. We recommend that a service manual pertaining to your vehicle be obtained for specific torque values, wiring diagrams and other related equipment. These manuals are normally available at automotive dealerships and parts stores.