

ADVANCE ADAPTERS INC.

P.O. Box 247, 4320 Aerotech Center Way

Paso Robles, CA 93447

Telephone: (800) 350-2223 Fax: (805) 238-4201

P/N: 713018

PAGE 1 OF 2

Page Rev. Date: 11-01-11

BRONCO II, RANGER 4WD & 1991-94 EXPLORERS DELUXE ENGINE MOUNTS

KIT CONSISTS OF:

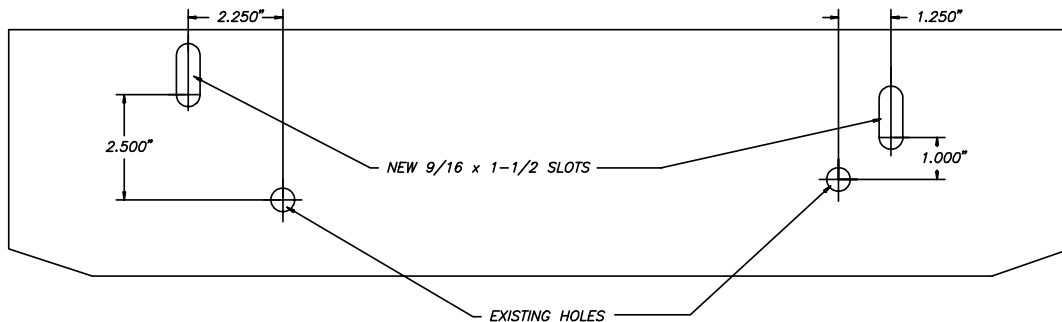
No.	Qty.	Part No.	Description
1.	1	713018-L	PASSENGER SIDE MOUNT
2.	1	713018-R	DRIVER'S SIDE MOUNT
3.	2	713018-S	METRIC NUTS

OPTIONAL ITEMS:

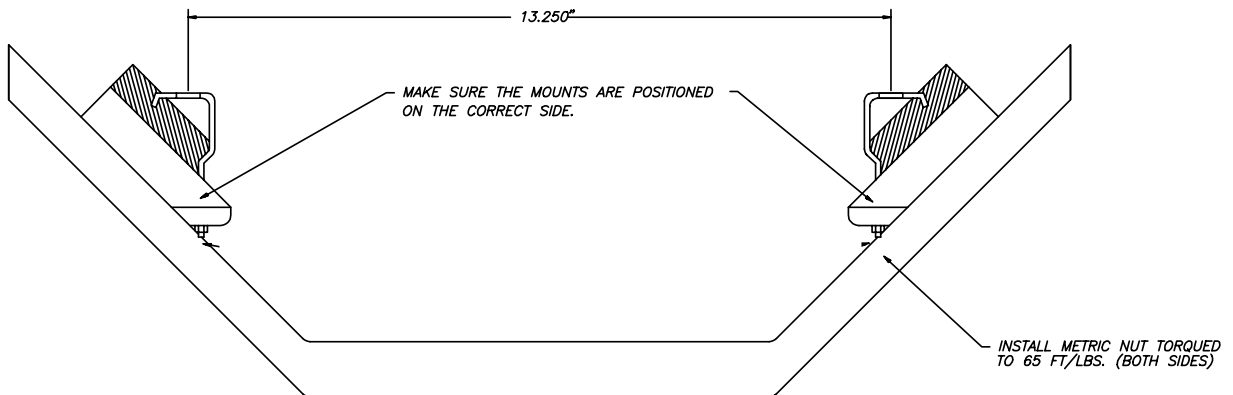
Qty.	Part No.	Description
1	717044	V8 SLICK FIT HEADERS
1	716084	REMOTE OIL FILTER
1	716412	FORD DUAL SUMPOIL PAN & PICKUP TUBE
1	716683	4-CORE RADIATOR W/ COOLER

INSTALLATION PROCEDURES:

These one piece motor mounts offer the easiest installation when installing the V-8 into the Bronco II and Ranger 4WD vehicles. You will need to make two slots in your crossmember. This can be done with a saber saw or torch. Once the holes are in place, install the motor mounts onto the crossmember. You will need two metric nuts to hold them into position. Once the mounts are in place, you will need to mark and grind a clearance area for each mount where the torque stud on the lower part of the mount interferes with the crossmember. **NOTE: Ford used a few different crossmember configurations. Where you drill your holes may be different then the diagram below. This diagram is just a guide.**



(FRONT)



SPECIAL NOTE: The components packaged in this kit have been assembled and machined for specific type of conversions. Modifications to any of the components will void any possible warranty or return privileges. If you do not fully understand modifications or changes that will be required to complete your conversion, we strongly recommend that you contact our sales department for more information. This instruction sheet is only to be used for the assembly of Advance Adapter components. We recommend that a service manual pertaining to your vehicle be obtained for specific torque values, wiring diagrams and other related equipment. These manuals are normally available at automotive dealerships and parts stores.

ADVANCE ADAPTERS INC.

P.O. Box 247, 4320 Aerotech Center Way

Paso Robles, CA 93447

Telephone: (800) 350-2223 Fax: (805) 238-4201

P/N: 713018

PAGE 2 OF 2

Page Rev. Date: 07-11-11

BRONCO II, RANGER 4WD & 1991-94 EXPLORERS DELUXE ENGINE MOUNTS



Left Mount

Right Mount

SPECIAL NOTE: The components packaged in this kit have been assembled and machined for specific type of conversions. Modifications to any of the components will void any possible warranty or return privileges. If you do not fully understand modifications or changes that will be required to complete your conversion, we strongly recommend that you contact our sales department for more information. This instruction sheet is only to be used for the assembly of Advance Adapter components. We recommend that a service manual pertaining to your vehicle be obtained for specific torque values, wiring diagrams and other related equipment. These manuals are normally available at automotive dealerships and parts stores.