

# ADVANCE ADAPTERS INC.

P.O. Box 247, 4320 Aerotech Center Way

Paso Robles, CA 93447

Telephone: (800) 350-2223 Fax: (805) 238-4201

# P/N: 27-0003BT

PAGE 1 OF 1

Page Rev. Date: 05-11-15

## DANA 300/AMC JEEP ENG. TRANS. FULL BELLHOUSING KIT

### KIT CONSISTS OF:

No.	Qty	Part No.	Description
1.	1	LC383271	10.5 CLUTCH DISC
2.	1 Kit	52-0229	29 SPLINE DANA 300 INPUT GEAR
3.	1 Kit	712568	DODGE NV4500 TO AMC ENGINE FULL BELLHOUSING
4.	1 Kit	716021	DANA 300 CROSSMEMBER MOUNT
5.	1 Kit	716048	DANA 300 CROSSMEMBER SPACER
6.	1 Kit	716050D1	NV4500 SHIFT HANDLE ASSY
7.	1 Kit	716221	DANA300/NV4500 RETAINER KIT
8.			NV4500 OUTPUT SHAFT- <i>MUST BE SHORTENED</i>

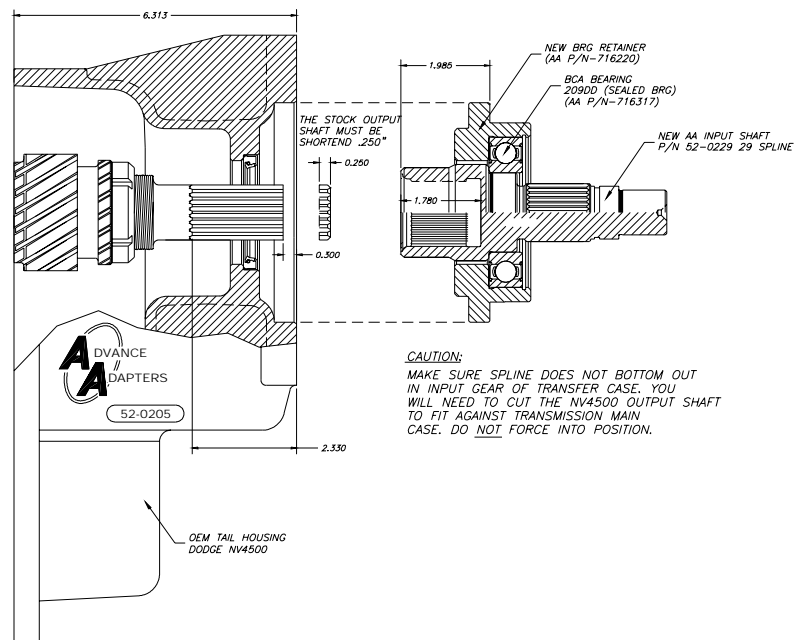
### INSTALLATION NOTES:

This kit is designed to fit the 29 spline Dodge Standard Duty NV4500 transmission with a GM input shaft installed. This is a parts pull sheet. Refer to the instruction sheet on each kit for proper installation.

This kit must also have a new input shaft 52-0221 or you should be using our transmission P/N 26-0029GM

### SPECIAL INSTRUCTIONS:

When assembling the transmission to the transfer case, **DO NOT FORCE** the two gear boxes together. The output shaft of the NV4500 must be shortened .250" to eliminate the possibility of pre-loading the transmission bearings for premature failure. Take the extra time to make sure that the shafts do not bottom out internally.



**SPECIAL NOTE:** The components packaged in this kit have been assembled and machined for specific type of conversions. Modifications to any of the components will void any possible warranty or return privileges. If you do not fully understand modifications or changes that will be required to complete your conversion, we strongly recommend that you contact our sales department for more information. This instruction sheet is only to be used for the assembly of Advance Adapter components. We recommend that a service manual pertaining to your vehicle be obtained for specific torque values, wiring diagrams and other related equipment. These manuals are normally available at automotive dealerships and parts stores.