

# ADVANCE ADAPTERS INC.

P.O. Box 247, 4320 Aerotech Center Way

Paso Robles, CA 93447

Telephone: (800) 350-2223 Fax: (805) 238-4201

## P/N: 712522

PAGE 1 OF 2

Page Rev. Date: 04-28-00

## JEEP T18 4 SPEED WITH 9-3/8" INPUT STICKOUT TO FORD V8 1965 & UP

### KIT CONSISTS OF:

No.	Qty	Part No.	Description
1.	1	711521	ADAPTER CASTING 1-1/2" THICK
2.	1	712511	ADAPTER KIT
3.	1	716173	PILOT BUSHING
4.	4	724303	7/16" LOCK WASHERS
5.	4	724308	7/16"-14 x 1-1/4" LONG H.H.C.S.
6.	1	JP001	JEEP INSTRUCTION MANUAL

### INSTALLATION INSTRUCTIONS:

This adapter kit is made for Jeep T18 4 speed transmissions that have an input shaft stickout length of 9-3/8". Before proceeding with this adapter kit, measure the distance from the front of the transmission case to the very tip of the shaft to verify the 9-3/8" length. If the shaft is 10" or longer, then you will need to exchange the kit you received.

The adapter kit consists of a complete adapter assembly, Part No. 712511, that will bolt to the #711521 adapter plate. The plate should index together for proper alignment and you will use the 4 bolts provided for bolting the 2 plates together. When the adapter plates are assembled to the front of the transmission case, you will require the stickout length to be approximately 6-3/8". This stickout length will be compatible with your new V8 bellhousing.

1. Install the proper pilot bushing into the engine crank shaft.
2. Remove the bearing retainer from the front of the 4 speed transmission and cut the snout off as illustrated to an overall length of 2-1/2". Bolt the retainer back to the 4 speed transmission using the original bolts and make sure that it does not interfere with the new retainer on the adapter casting.
3. Bolt the adapter plate to the transmission case and make sure that the adapter plate indexes over the modified bearing retainer. Use the original 4 bolts for assembling the plate to the transmission.
4. Bolt the new bearing retainer to the front of the adapter housing using the 4 bolts supplied.
5. Bolt the adapter plate to your new V8 bellhousing. The bellhousing must have a transmission index diameter of 4.848".

**SPECIAL NOTE:** The components packaged in this kit have been assembled and machined for specific type of conversions. Modifications to any of the components will void any possible warranty or return privileges. If you do not fully understand modifications or changes that will be required to complete your conversion, we strongly recommend that you contact our sales department for more information. This instruction sheet is only to be used for the assembly of Advance Adapter components. We recommend that a service manual pertaining to your vehicle be obtained for specific torque values, wiring diagrams and other related equipment. These manuals are normally available at automotive dealerships and parts stores.

# ADVANCE ADAPTERS INC.

P.O. Box 247, 4320 Aerotech Center Way

Paso Robles, CA 93447

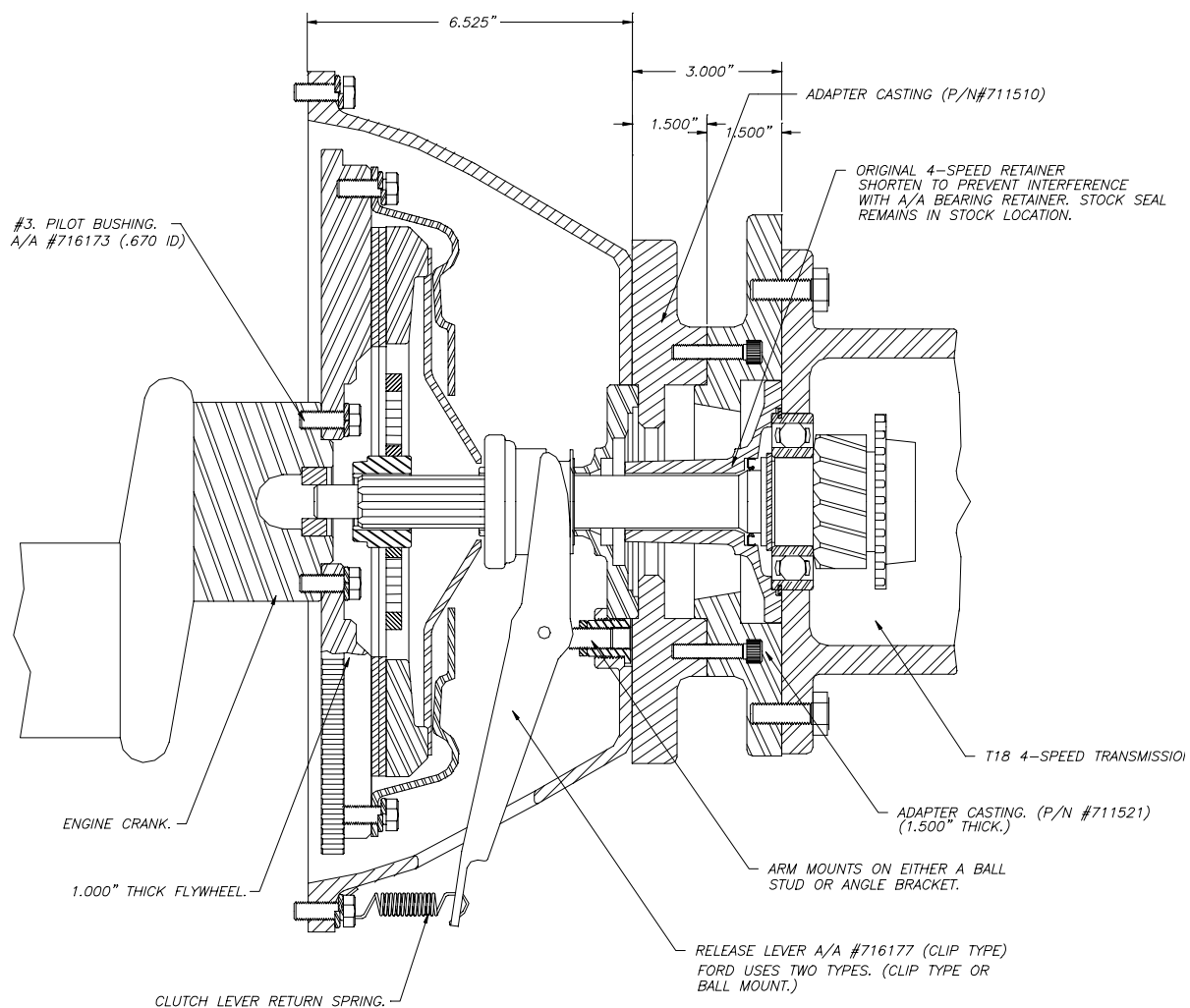
Telephone: (800) 350-2223 Fax: (805) 238-4201

# P/N: 712522

PAGE 2 OF 2

Page Rev. Date: 04-28-00

## JEEP T18 4 SPEED WITH 9-3/8" INPUT STICKOUT TO FORD V8 1965 & UP



**SPECIAL NOTE:** The components packaged in this kit have been assembled and machined for specific type of conversions. Modifications to any of the components will void any possible warranty or return privileges. If you do not fully understand modifications or changes that will be required to complete your conversion, we strongly recommend that you contact our sales department for more information. This instruction sheet is only to be used for the assembly of Advance Adapter components. We recommend that a service manual pertaining to your vehicle be obtained for specific torque values, wiring diagrams and other related equipment. These manuals are normally available at automotive dealerships and parts stores.