

GM TH400 AUTOMATIC TO ATLAS 2 & 4 SPEED 2.8" ADAPTER

KIT CONSISTS OF:

No.	Qty	Part No.	Description
1.	1	51-6440	ADAPTER HOUSING
2.	1	716079	SENSOR HOLE PLUG
3.	1	716511	O-RING
4.	6	301410	3/8-16-1.25" FHCS

GM TH400

The GM TH400 has a case length of 24-1/4", 13 bolts for holding the oil pan in position and is available in 3 different engine to transmission bolt patterns. Make sure you have selected the proper TH400 for your particular engine. The rear side of the transmission case will have a hex shaped bolt pattern that uses 6 bolts. There are several various lengths of output shafts that the transmission has been equipped with. The shaft that works with this adapter is the one that is 6.9" overall. The shaft when installed into the TH400 will stick out approximately 2.5".

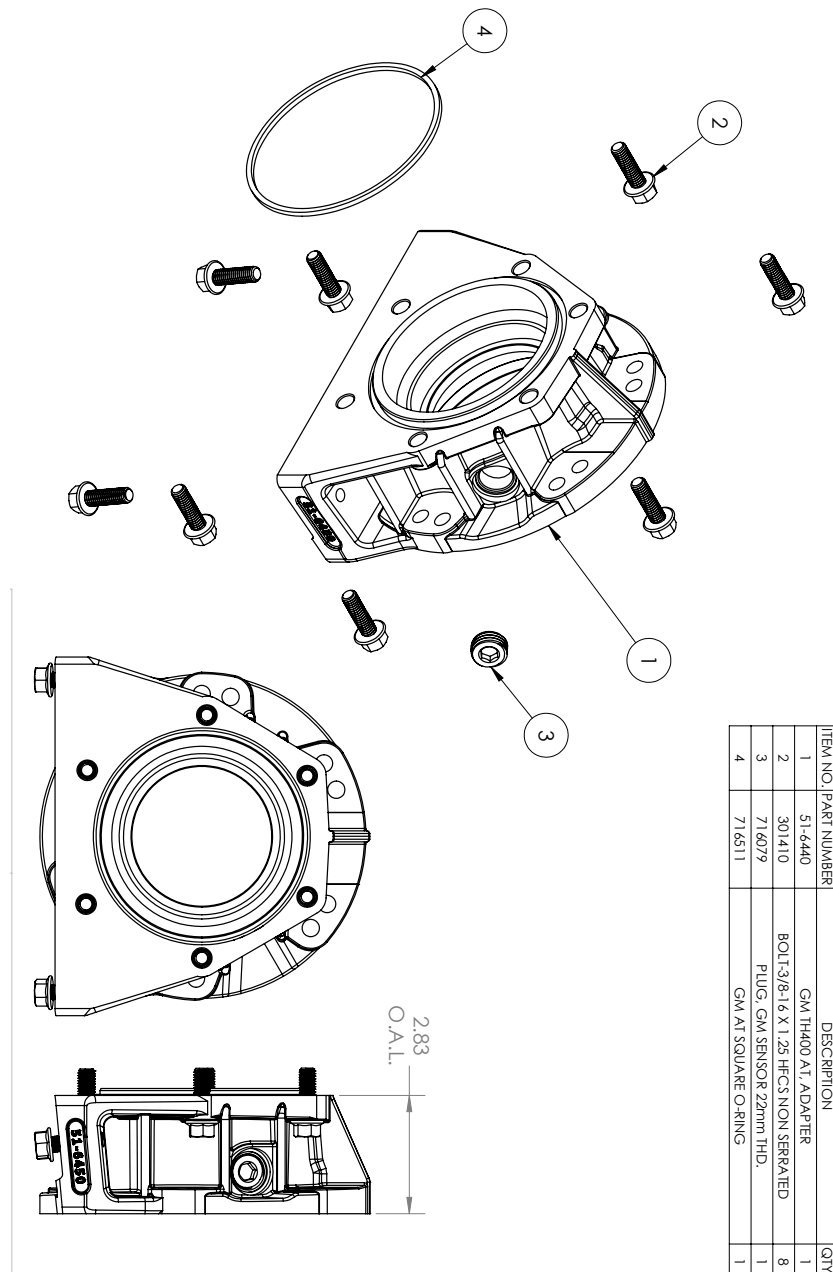
INSTALLATION

1. Determine the correct transfer case rotation for your application and then bolt the 51-6440 casting to the Atlas.
2. install the sensor hole plug. If you have a newer engine that requires a vss signal you will need to purchase a sensor and reluctor. (sensor P/N 300619, 2 speed reluctor P/N 300623 and the 4 speed P/N 300617)
3. Bolt the 51-6440 casting to the rear of the TH400 using the new bolts. Make sure that the TH400 output shaft and the Atlas input shaft do not bottom out. **DO NOT FORCE THE ADAPTERS TOGETHER.** If assistance is needed, please feel free to call the phone number listed above.



SPECIAL NOTE: The components packaged in this kit have been assembled and machined for specific type of conversions. Modifications to any of the components will void any possible warranty or return privileges. If you do not fully understand modifications or changes that will be required to complete your conversion, we strongly recommend that you contact our sales department for more information. This instruction sheet is only to be used for the assembly of Advance Adapter components. We recommend that a service manual pertaining to your vehicle be obtained for specific torque values, wiring diagrams and other related equipment. These manuals are normally available at automotive dealerships and parts stores.

GM th400 AUTOMATIC TO ATLAS 2 & 4 SPEED 2.8" ADAPTER



SPECIAL NOTE: The components packaged in this kit have been assembled and machined for specific type of conversions. Modifications to any of the components will void any possible warranty or return privileges. If you do not fully understand modifications or changes that will be required to complete your conversion, we strongly recommend that you contact our sales department for more information. This instruction sheet is only to be used for the assembly of Advance Adapter components. We recommend that a service manual pertaining to your vehicle be obtained for specific torque values, wiring diagrams and other related equipment. These manuals are normally available at automotive dealerships and parts stores.