



P.O. Box 247, 4320 Aerotech Center Way
Paso Robles, CA 93447
Telephone: (800) 350-2223 Fax: (805) 238-4201
PAGE 1 OF 2 Page Rev. Date: 10-25-18
P/N: 50-8603

JEEP AX15 5 SPEED TO JEEP DANA 300 TRANSFER CASE

KIT CONSISTS OF:

No.	Qty	Part No.	Description
1.	1	51-8603	ADAPTER CASTING
2.	2	716517	GASKET
3.	6	723731	S.H.C.S. 3/8"-16 x 1"
4.	6	302069	STUD 3/8"-16/24
5.	6	302071	3/8"-24 NUT

SPECIAL NOTE:

When replacing a New Process transfer case in your vehicle with a Dana 300 transfer case, you must also change the breather or vent cap on the end of the vent hose. Failure to change this will cause the transfer case oil to blow out the stock vent cap.

INSTRUCTIONS:

This kit is designed to adapt the Jeep AX15 5 speed to the Jeep Dana 300 transfer case.

The AX15 was coupled to a NP231 transfer case from the factory. The NP231 has the front driveshaft on the driver's side of the vehicle. When upgrading the axles, and if you get a front differential on the passenger side, you will need to replace the stock transfer case. The best choice is the Dana 300 because of the 2.62 low gear ratio and all gear drive design. The Dana 300 and NP231 both have the same input spline count, which is 23 spline. However, they have a different rotation.

This kit will allow you four rotation angles for the Dana 300, and proper spline engagement with little or no modifications.

The adapter plate must be rotated to line up the 6 counter sunk holes to the Dana 300. Use a gasket or RTV blue silicone between these two components. Fasten the S.H.C.S. bolts with Loctite, securing the plate to the transfer case.

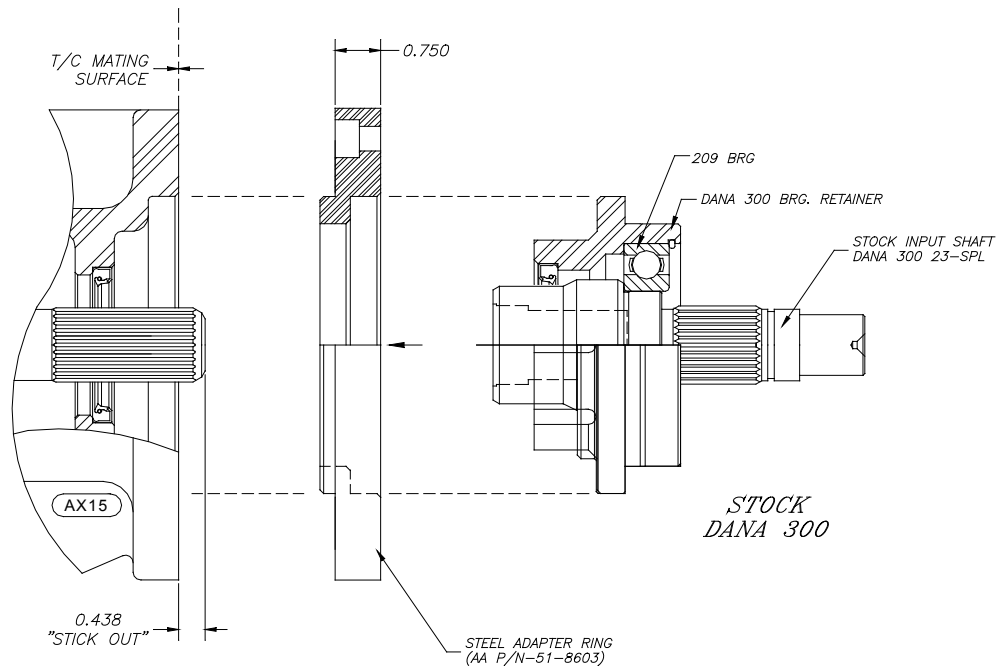
If you decide to use the lower rotation, you will need to grind a bit on the bottom of the Dana 300 shifter boss, due to interference with the AX15 case. The upper rotation should not require modifications.

Once you decide on the rotation, install the six studs into the adapter ring (these studs are a tight fit into the ring). Use a gasket or RTV blue silicone and fasten the transfer case to the transmission adapter plate.

Things to consider during the installation are floorboard clearances and transfer case shifter handle location & clearance. Since we have rotated the Dana 300 up higher than the stock rotation, the shifter handle may need to be bent for proper fit.

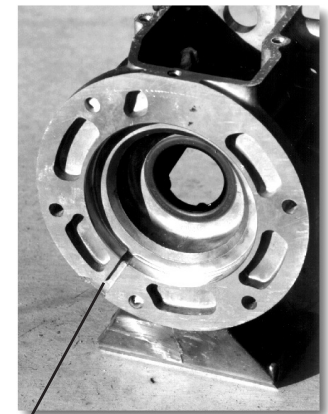
SPECIAL NOTE: The components packaged in this kit have been assembled and machined for specific type of conversions. Modifications to any of the components will void any possible warranty or return privileges. If you do not fully understand modifications or changes that will be required to complete your conversion, we strongly recommend that you contact our sales department for more information. This instruction sheet is only to be used for the assembly of Advance Adapter components. We recommend that a service manual pertaining to your vehicle be obtained for specific torque values, wiring diagrams and other related equipment. These manuals are normally available at automotive dealerships and parts stores.

JEEP AX15 5 SPEED TO JEEP DANA 300 TRANSFER CASE



NOTE: Some transmissions have a weep hole or slot (as seen in picture to right). When using this kit it is important that this hole/slot is sealed using RTV Blue Silicone. This will prevent fluid leaking from the adapter.

The location may vary depending on the year and model of transmission, some transmissions have a weep hole that begins on the inside of the casting and continues down through the bottom of the mounting foot.



RTV Blue silicone shut the oil slot completely to prevent leakage.

SPECIAL NOTE: The components packaged in this kit have been assembled and machined for specific type of conversions. Modifications to any of the components will void any possible warranty or return privileges. If you do not fully understand modifications or changes that will be required to complete your conversion, we strongly recommend that you contact our sales department for more information. This instruction sheet is only to be used for the assembly of Advance Adapter components. We recommend that a service manual pertaining to your vehicle be obtained for specific torque values, wiring diagrams and other related equipment. These manuals are normally available at automotive dealerships and parts stores.