



P.O. Box 247, 4320 Aerotech Center Way
Paso Robles, CA 93447
Telephone: (800) 350-2223 Fax: (805) 238-4201
PAGE 1 OF 2 Page Rev. Date: 02-05-18
P/N: 50-0212

GM NEW VENTURE 4500 23 TOOTH TO JEEP NP231 T/C

KIT CONSISTS OF:

No.	Qty.	Part No.	Description
1.	1	51-0212	ADAPTER HOUSING
2	1	52-0205	SHAFT - 23 TOOTH
3.	1	716460	LOCK NUT 1.5-18
4.	1	716729	SEAL (NATIONAL SEAL #456057)
5.	8	720046	S.H.C.S. 10mm 1.5 THR x 40mm
6.	11	723704	3/8" LOCK WASHERS
7.	8	723723	5/8"- 16 x 1-1/2" LG. H.H.C.S.
8.	1	723725	3/8"-16 x 2" LONG H.H.C.S.
9.	6	723731	3/8"- 16 x 1" LG. S.H.C.S.
10.	2	724317	7/16"-14 x 1" S.H.C.S.
11.	8	724324	7/16" LOCKWASHERS, HIGH COLLAR

Optional items:

P/N 715542 Jeep TJ linkang mount note:The adapter kit requires some modifications to work with this shifter brkt 715542.

P/N 715543-231 Cable linkage for Jeep TJ's transfer case note:The adapter kit requires some modifications to work with this shifter brkt 715542.

Note: this kit will not work with a NP207 transfer case

SPECIAL INSTRUCTIONS:

This adapter kit is designed for exclusive use with either 2WD or 4WD New Venture 4500 transmission. The output shaft must be removed and the new shaft installed. The original GM harmonic balancer or 2WD speedometer drive will need to be removed and replaced with the nut and spring washer. We have included a new adapter housing that has the NP231 pattern and a seal that will fit the input sleeve of the transfer case.

When assembling the transmission to the transfer case, **DO NOT FORCE** the two gear boxes together. If the shaft is too long, there is the possibility of pre-loading the transmission bearings for premature failure. Take the extra time to make sure that the shafts do not bottom out internally. If there is an interference problem, it may be necessary to grind the input end of the NP231 transfer case. We have found that some NV4500's have some differences on the output spline relief. If you were to shorten the output shaft you will still run into interference problems. You must shorten the NP231 input shaft if you are running into interference. The largest variation we have seen is .045".

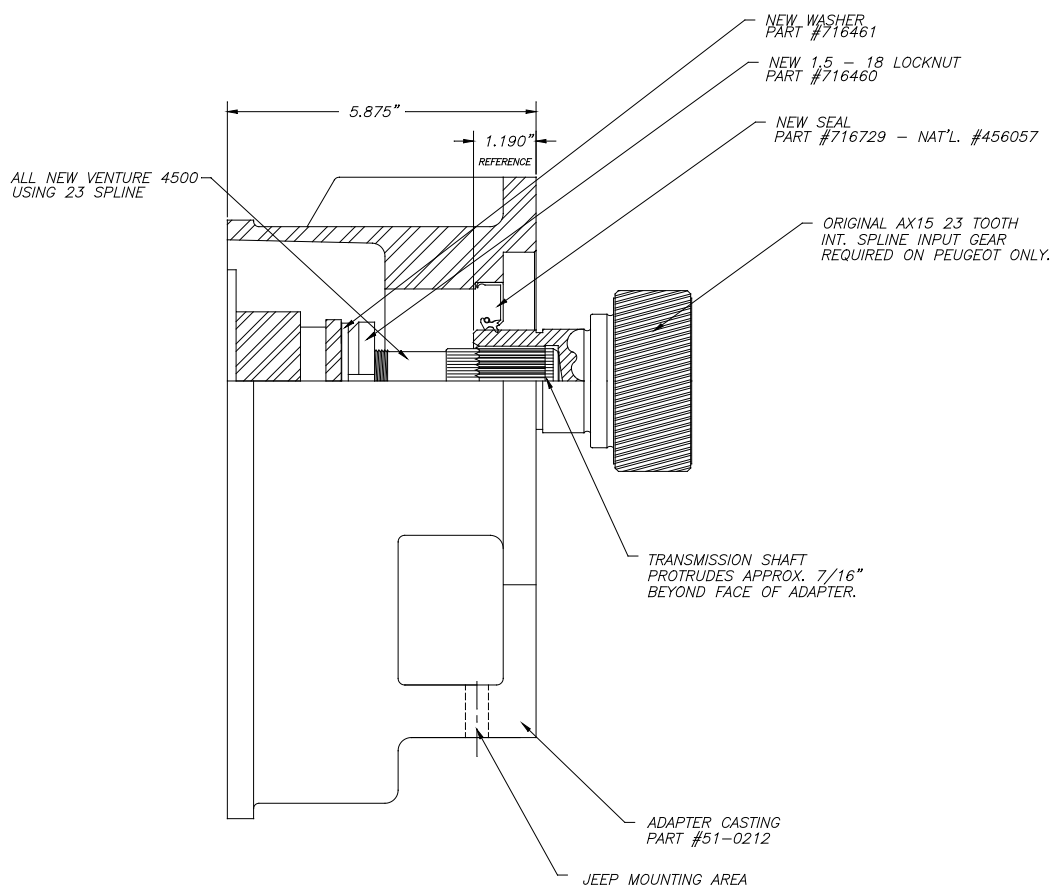
If you are replacing a Peugeot transmission, you will require the new input shaft for the NP231 transfer case. AX15 conversions can avoid this requirement since Adapter Kit No. 50-0212 has the correct output shaft.

The overall length of this transmission and adapter is 18-1/4". This transmission adapter can be used with both new V8 installations and 6 cylinder engines. This transmission assembly with the new bellhousing will have an overall length of approximately 25" from back of engine to the front of the transfer case. The original AX15 length is 24-1/8", while the Peugeot is 23-3/4".

SPECIAL NOTE: The components packaged in this kit have been assembled and machined for specific type of conversions. Modifications to any of the components will void any possible warranty or return privileges. If you do not fully understand modifications or changes that will be required to complete your conversion, we strongly recommend that you contact our sales department for more information. This instruction sheet is only to be used for the assembly of Advance Adapter components. We recommend that a service manual pertaining to your vehicle be obtained for specific torque values, wiring diagrams and other related equipment. These manuals are normally available at automotive dealerships and parts stores.

GM NEW VENTURE 4500 23 TOOTH TO JEEP NP231 T/C

TRANSMISSION ASSEMBLY O.A.L. = 18-1/4"



NOTE: This kit can be used with all GM NV4500 5 speed transmissions.

CAUTION: Make sure that spline does not bottom out in input gear of transfer case. Shaft may need slight grinding in order for adapter to fit against transmission main case. **DO NOT FORCE INTO POSITION.**

SPECIAL NOTE: The components packaged in this kit have been assembled and machined for specific type of conversions. Modifications to any of the components will void any possible warranty or return privileges. If you do not fully understand modifications or changes that will be required to complete your conversion, we strongly recommend that you contact our sales department for more information. This instruction sheet is only to be used for the assembly of Advance Adapter components. We recommend that a service manual pertaining to your vehicle be obtained for specific torque values, wiring diagrams and other related equipment. These manuals are normally available at automotive dealerships and parts stores.