

## DODGE V8 WELD-IN MOUNTS 1997-06 JEEP TJ

**KIT CONSISTS OF:**

No.	Qty	Part No.	Description
1.	1	713008-B	BOLT PACK RUBBER MOUNT KIT
2.	1	713094L	LEFT MOUNT
3.	2	713094M	BLOCK MOUNTS
4.	1	713094R	RIGHT MOUNT
5.	2	713094S	DRIVER SIDE SPACER 360 ENGINES
6.	4	716656	RUBBER MOUNT
7.	8	724301	NYLON LOCK NUT 7/16"-14
8.	16	724302	FLAT WASHER 7/16"
9.	4	724308	H.H.C.S. 7/16"-14 x 1-3/4"
10.	4	724309	H.H.C.S. 7/16"-14 x 2"



**INSTALLATION PROCEDURES:**

This mount kit is designed as a weld-in application. Cutting, grinding, and welding is required. These mounts can be used when replacing both a stock 6 cylinder or 4 cylinder engine.

To install a Dodge V8 into a Jeep TJ, we recommend that the entire front clip of the vehicle be removed for ease of installation. This would also include the hood, grille, both fenders, and miscellaneous components. Some of the components in the engine compartment may need to be relocated (i.e. smog equipment, battery, radiator, overflow, etc.). Once the stock engine has been removed, you'll be ready to begin the new engine installation.

Bolt the block mounts to the block using the hardware given. Take note of the thicknesses of each boss and use the correct length bolt accordingly. Also, one of the bolts may not be used on the block because some Dodge blocks have only 3 holes on one side.



Grind or torch off the stock frame mounts. Grind off all the welds, and make the frame rails smooth. Next, identify the holes on each side of the frame which you will use to locate the mounts. They are located on the inside of the frame, about 23" away from the front crossmember. Using the bolt that protrudes from the frame mount as an alignment pin, C-

clamp the mounts to the inside of the frame (the front-to-back angle of the mounts will be determined later). Place the engine in the engine compartment and align the holes from the block mounts to the frame mounts. Rotate the doweled frame mounts so they hit parallel to the engine mounts. Tighten the C-clamp and/or tack weld them in place. Remove the engine assembly and full-weld the mounts to the frame.



**SPECIAL NOTE:** The components packaged in this kit have been assembled and machined for specific type of conversions. Modifications to any of the components will void any possible warranty or return privileges. If you do not fully understand modifications or changes that will be required to complete your conversion, we strongly recommend that you contact our sales department for more information. This instruction sheet is only to be used for the assembly of Advance Adapter components. We recommend that a service manual pertaining to your vehicle be obtained for specific torque values, wiring diagrams and other related equipment. These manuals are normally available at automotive dealerships and parts stores.

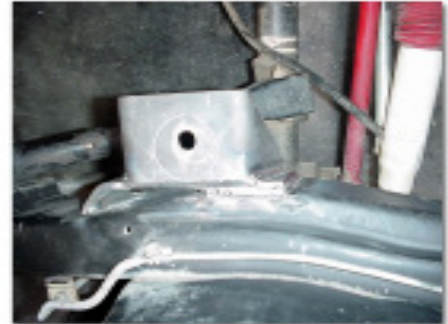
## DODGE V8 WELD-IN MOUNTS 1997-06 JEEP TJ



New frame mounts welded into position

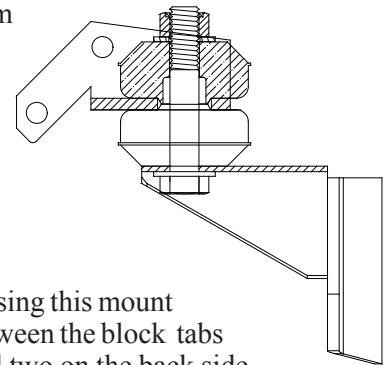


Driver's side frame mounts welded into position



Passengers side frame mounts welded into position

Once the frame mounts are welded into position, the Dodge engine can be reinstalled. We have provided new rubber indexing donuts for isolating the engine vibrations from the frame and body. These rubber donuts index on the top and bottom of the block mount. The large 5/8" bolt is then inserted from the bottom of the frame mount up through the rubber mounts and the block mount. The holes on the frame mount are slightly slotted to adjust the block inside the frame rails. Once the block is in the correct location and the rubber mounts are installed, tighten the 5/8" locknuts to 25-30 ft./lbs. to secure the engine location.



### DODGE 360 INSTALLATION NOTES:

The Dodge 360 driver's side mount is narrower than that of the Dodge 318. When using this mount on a 360, we have included four 1/4" spacers. These spacers need to be installed between the block tabs and the block mount. We recommend using two on the front side of the mount and two on the back side.

### INSTALLATION NOTES:

The installation of the Dodge 318 fits well into the Jeep TJs. The application we converted used a stock engine-driven fan, Chrysler P/N 52027888(1998 360 fan). We installed one of our custom radiators (P/N 716687) and used a 6 cylinder fan shroud, Chrysler P/N5202792S (1998 4.0 TJ shroud). The wire harness off the 1999 Dodge 318 was spliced into the stock TJ wire loom. The service manual for the TJ and the Dodge V8 show the wire schematics which made this fairly easy.

**Optional items:** 716687 - Brass radiator, 716691-AA - Aluminum radiator with transmission cooler, 716693-AA Aluminum radiator, 716670 - Electric spal fan kit, 715542 - Jeep TJ transfer case shifter linkage bracket.

On 360/5.9L engine swaps we recommend using the aluminum radiators with the electric fan kits due to the higher heat produced by the larger engine.

The spacers on the 360 drivers side mount, go on both sides of the stock tabs to take up the space that this mount is short. Dodge 360 LA series blocks may require additional spacers, 713094S can be shipped out free of charge.

**SPECIAL NOTE:** The components packaged in this kit have been assembled and machined for specific type of conversions. Modifications to any of the components will void any possible warranty or return privileges. If you do not fully understand modifications or changes that will be required to complete your conversion, we strongly recommend that you contact our sales department for more information. This instruction sheet is only to be used for the assembly of Advance Adapter components. We recommend that a service manual pertaining to your vehicle be obtained for specific torque values, wiring diagrams and other related equipment. These manuals are normally available at automotive dealerships and parts stores.