

# ADVANCE ADAPTERS INC.

P.O. Box 247, 4320 Aerotech Center Way  
Paso Robles, CA 93447

Telephone: (800) 350-2223 Fax: (805) 238-4201

P/N: 50-3206

PAGE 1 OF 3

Page Rev. Date: 5-05-14

## GM 4WD 32T TH400 AUTOMATIC TO FORD NP205/208 & B/W TRANSFER CASE

### KIT CONSISTS OF:

No.	Qty	Part No.	Description
1.	1	51-3204	ADAPTER HOUSING (#711164 Modified)
2.	1	52-9400	32T X 31T MALE SPUD SHAFT
3.	1	716165	1-15/16" PLUG
4.	1	716510	GMTH400 GASKET
5.	1	716517	TRANSFER CASE GASKET
6.	1	716518	GASKET RING (USED ON NP208 AND B/W/T/C ONLY)
6.	6	723701	HEX NUTS 3/8"-16
7.	6	723704	3/8" LOCK WASHERS
8.	6	723711	STUD BOLTS 3/8"-16 X 2" LONG

### NOTE:

This adapter kit is for a stock 4WD TH400 output shaft being adapted to a Ford 31 spline transfer case. The adapter housing has been modified for clearance of the transfer case shift controls on the NP205. You will need to fabricate a new transfer case pivot support for the handle of the transfer case. Most installations will require drive line modifications. The overall assembled length of the adapter and TH400 will be 28-1/2".

**SPECIAL NOTE:** The components packaged in this kit have been assembled and machined for specific type of conversions. Modifications to any of the components will void any possible warranty or return privileges. If you do not fully understand modifications or changes that will be required to complete your conversion, we strongly recommend that you contact our sales department for more information. This instruction sheet is only to be used for the assembly of Advance Adapter components. We recommend that a service manual pertaining to your vehicle be obtained for specific torque values, wiring diagrams and other related equipment. These manuals are normally available at automotive dealerships and parts stores.

# ADVANCE ADAPTERS INC.

P.O. Box 247, 4320 Aerotech Center Way  
Paso Robles, CA 93447

Telephone: (800) 350-2223 Fax: (805) 238-4201

P/N: 50-3206

PAGE 2 OF 3

Page Rev. Date: 5-05-14

## GM 4WD 32T TH400 AUTOMATIC TO FORD NP205/208 & B/W TRANSFER CASE

### GM TURBO 400 3 SPEED AUTOMATIC

The GM TH400 has a case length of 24-3/4", 13 bolts for holding the oil pan in position and is available in 3 different engine to transmission bolt patterns. Make sure you have selected the proper TH400 for your particular engine. The rear side of the transmission case will have a hex shaped bolt pattern that uses 6 bolts. There are several various lengths of output shafts that the transmission has been equipped with and you will need the standard 4WD output shaft that protrudes 2.40" beyond the main case. The rear transmission support will now be located on the new adapter housing or, in some cases, on the transfer case.

When installing the new transfer case adapter, make sure that the new spud shaft and the output shaft do not bottom out when coupled to the transfer case. We have found on occasion that a transmission output shaft may be slightly longer than we have allowed for and when coupling into our new spud shaft, we find a small amount of interference. The adapter housing and spud shaft must be assembled to the back of the transmission without interference. **DO NOT FORCE THE NEW TAILHOUSING ONTO THE TRANSMISSION.** If assistance is needed, please feel free to call the number listed above.

All installations will require the use of a transmission cooler. The cooler can be either installed in the radiator or a remote location is acceptable. The transmission shift control can either be a Hurst floor mounted type shifter or sometimes the existing column shift can be modified on certain applications.

On the side of the TH400 case, you will find a 1-15/16" hole that must be plugged with the soft plug provided in the kit. We recommend that you use a good sealer when installing the soft plug in order to prevent any possible leakage. The adapter plate bolts directly to the back of the TH400 transmission using 6 stud bolts, nuts and lock washers.

The vacuum modulator line will need to be shortened and re-routed to the right front side of the transmission. The original cooler lines and fitting will line up with the TH400 transmission. The original flexplate and converter can be retained. The transmission shift linkage can also be retained. The transmission dipstick must be from the TH400 application.

The 4WD linkage mounting bracket will need to be relocated further forward to allow for the added length of the new transmission. The TH400 kickdown operates off an electric signal. You will be required to purchase a late model gas pedal bracket, GM No. 1242101 and switch, GM No. 39772676.

**SPECIAL NOTE:** The components packaged in this kit have been assembled and machined for specific type of conversions. Modifications to any of the components will void any possible warranty or return privileges. If you do not fully understand modifications or changes that will be required to complete your conversion, we strongly recommend that you contact our sales department for more information. This instruction sheet is only to be used for the assembly of Advance Adapter components. We recommend that a service manual pertaining to your vehicle be obtained for specific torque values, wiring diagrams and other related equipment. These manuals are normally available at automotive dealerships and parts stores.

# ADVANCE ADAPTERS INC.

P.O. Box 247, 4320 Aerotech Center Way  
Paso Robles, CA 93447

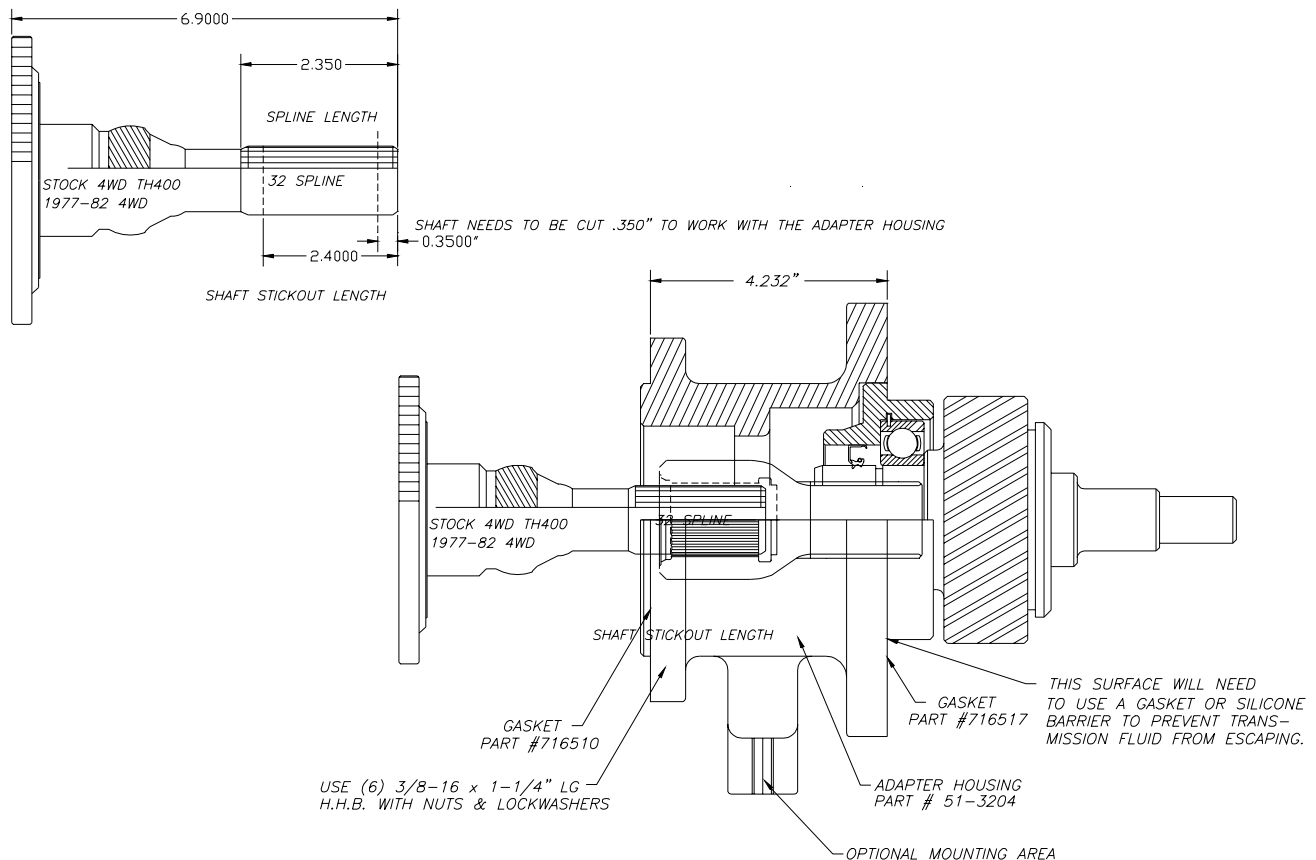
Telephone: (800) 350-2223 Fax: (805) 238-4201

## P/N: 50-3206

PAGE 3 OF 3

Page Rev. Date: 5-05-14

## GM 4WD 32T TH400 AUTOMATIC TO FORD NP205/208 & B/W TRANSFER CASE



**SPECIAL NOTE:** The components packaged in this kit have been assembled and machined for specific type of conversions. Modifications to any of the components will void any possible warranty or return privileges. If you do not fully understand modifications or changes that will be required to complete your conversion, we strongly recommend that you contact our sales department for more information. This instruction sheet is only to be used for the assembly of Advance Adapter components. We recommend that a service manual pertaining to your vehicle be obtained for specific torque values, wiring diagrams and other related equipment. These manuals are normally available at automotive dealerships and parts stores.