



P.O. Box 247, 4320 Aerotech Center Way
Paso Robles, CA 93447
Telephone: (800) 350-2223 Fax: (805) 238-4201
PAGE 1 OF 2 Page Rev. Date: 11-14-23
P/N: 50-9906

Ram TRX & Track Hawk 6.2 8HP95 43 spline output

KIT CONSISTS OF:

No.	Qty	Part No.	Description
1	51-9905		5.7 & 6.2 8HP70/8HP95 Adapter housing
1	52-9902		SHAFT- JEEP 43 FEMALE X JEEP 23 MALE
1	716308		SEALED BEARING 209RS
1	716450		SNAP RING (T350 & T400)
1	716456		TRUE ARC SNAP RING

Ram TRX & Track Hawk 6.2 8HP95 43 spline output:

This adapters couples the popular 8HP95 transmission to an Atlas 2 speed transfer case. This drivetrain has gained popularity for swapping into the Jeep JK, JL& JT's. The ununique pattern on this transmission requires an adapter allowing the Atlas to be installed. The adapter uses a spud shaft that couples the 43 spline transmission output shaft to a 23 spline Atlas transfer case. The adapter length is 7.75".

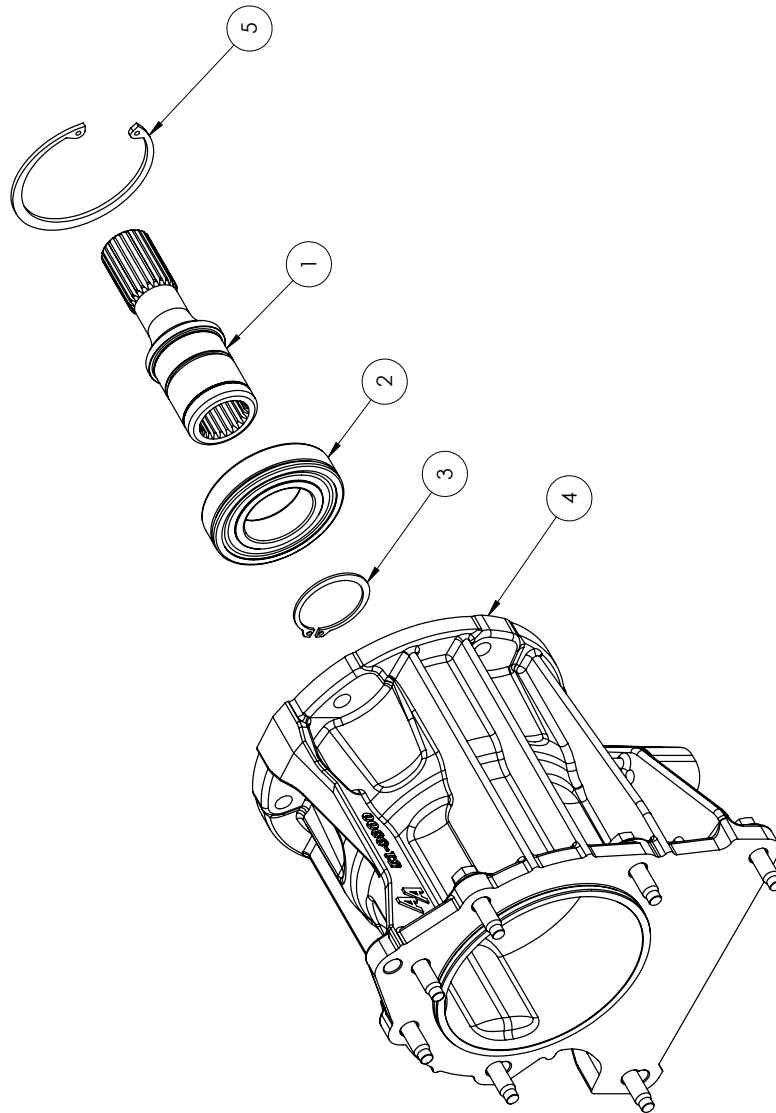
The adapter will retain the stock Jeep transmission support which bolts to the new adapter housing, the crossmember may need some modifications do to drivetrain length. Jeep JK applications should use the Jepp JL rubber support and will need to modify the crossmember to fit.

Installation notes: Install the new adapter housing using the factory bolts. We recommend not connecting the crossmenber back to the frame until the Atlas is installed. The bolts that are closest to the floorboard are hard to tighten if the drivetrain is back in the stock position.

Note: The stock transfer case breather need to be removed and installed on the Atlas. The Atlas is shipped with a red cap that covers the elbow that the breather should be connected to.

SPECIAL NOTE: The components packaged in this kit have been assembled and machined for specific type of conversions. Modifications to any of the components will void any possible warranty or return privileges. If you do not fully understand modifications or changes that will be required to complete your conversion, we strongly recommend that you contact our sales department for more information. This instruction sheet is only to be used for the assembly of Advance Adapter components. We recommend that a service manual pertaining to your vehicle be obtained for specific torque values, wiring diagrams and other related equipment. These manuals are normally available at automotive dealerships and parts stores.

Ram TRX & Track Hawk 6.2 8HP95 43 spline output



SPECIAL NOTE: The components packaged in this kit have been assembled and machined for specific type of conversions. Modifications to any of the components will void any possible warranty or return privileges. If you do not fully understand modifications or changes that will be required to complete your conversion, we strongly recommend that you contact our sales department for more information. This instruction sheet is only to be used for the assembly of Advance Adapter components. We recommend that a service manual pertaining to your vehicle be obtained for specific torque values, wiring diagrams and other related equipment. These manuals are normally available at automotive dealerships and parts stores.