



P.O. Box 247, 4320 Aerotech Center Way  
Paso Robles, CA 93447  
Telephone: (800) 350-2223 Fax: (805) 238-4201  
PAGE 1 OF 2 Page Rev. Date: 03-11-19  
P/N: 712519

## GM SM465 4 SPEED TO LAND CRUISER 3 SPEED BELLHOUSING

### KIT CONSISTS OF:

No.	Qty	Part No.	Description
1.	1	716135	SPECIAL BEARING RETAINER ( <i>Modified GM Retainer</i> )
2.	1	716157	SPECIAL PILOT BEARING ( <i>Toyota Crank x .590 GM I.D.</i> )
3.	1	716535	SM465 RETAINER GASKET
4.	1	716715	SEAL SM465 RETAINER

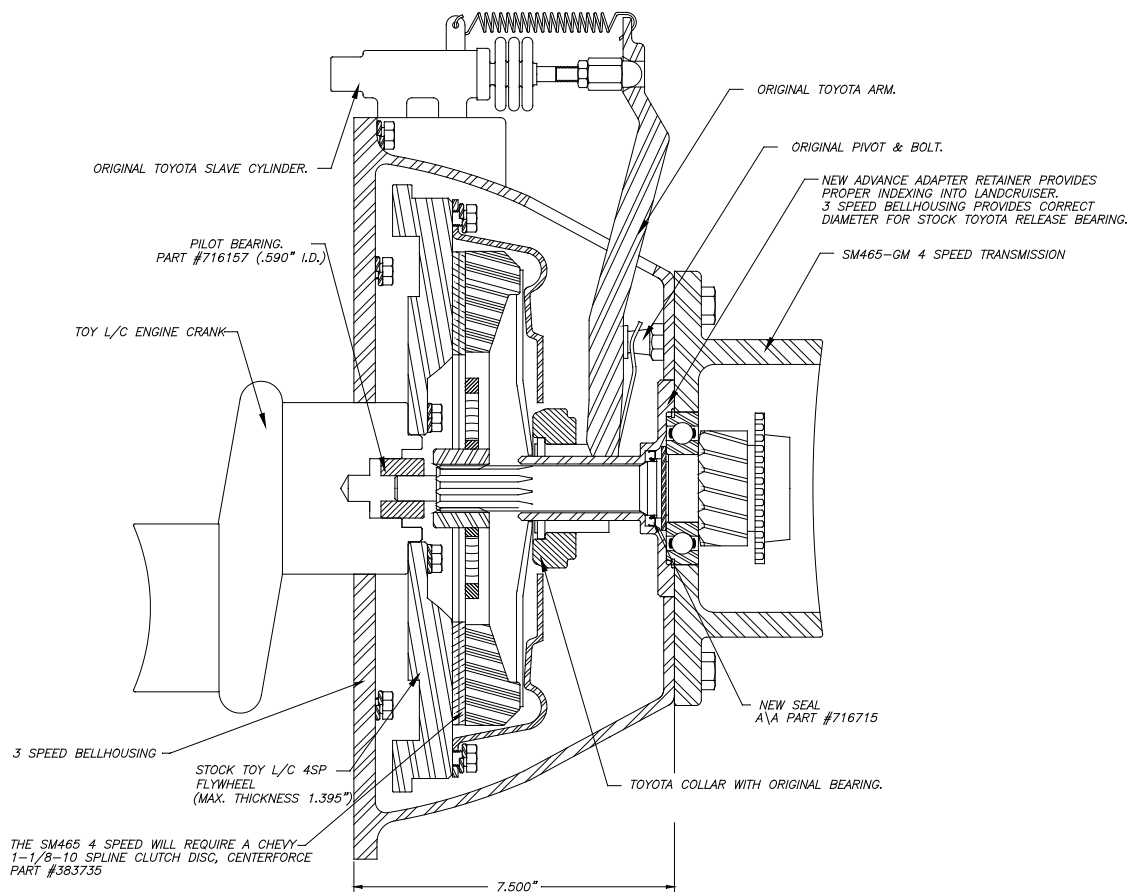
### NOTES:

It has been very popular to adapt the GM SM465 4 speed transmission to the Toyota Land Cruiser engines. In order to maintain the original Toyota clutch controls, we found it necessary to use a new bearing retainer modified for the stock Toyota components. You will find the new retainer to have the same snout diameter as the original Toyota component. A new seal has been provided and should be installed with the open side towards the transmission. The outside diameter of the new retainer has also been modified to index into the Land Cruiser 3 speed bellhousing. When installing the new retainer onto the Chevy transmission, make sure that the return oil slot lines up properly with the oil return hole in the front of the transmission case. On the early style transmissions, the rotation of the bolt holes could be installed incorrectly if the correct measures are not taken.

A new pilot bearing has been included that will fit in the back of the Toyota crank shaft and support the tip of the Chevy 4 speed transmission. The original Land Cruiser clutch disc will need to be changed to a GM clutch disc. If your stock clutch was 10", use P/N 383303. For an 11' setup, use P/N 383735.

**SPECIAL NOTE:** The components packaged in this kit have been assembled and machined for specific type of conversions. Modifications to any of the components will void any possible warranty or return privileges. If you do not fully understand modifications or changes that will be required to complete your conversion, we strongly recommend that you contact our sales department for more information. This instruction sheet is only to be used for the assembly of Advance Adapter components. We recommend that a service manual pertaining to your vehicle be obtained for specific torque values, wiring diagrams and other related equipment. These manuals are normally available at automotive dealerships and parts stores.

## GM SM465 4 SPEED TO LAND CRUISER 3 SPEED BELLHOUSING



### NOTES:

1. Make sure that the new retainer aligns with the oil return on the SM465 transmission.
2. Some SM465 transmissions do not require a seal.
3. Use new bolts for mounting the retainer to transmission. The bolt pattern of the retainer is not symmetrical and will only fit in one position.

**SPECIAL NOTE:** The components packaged in this kit have been assembled and machined for specific type of conversions. Modifications to any of the components will void any possible warranty or return privileges. If you do not fully understand modifications or changes that will be required to complete your conversion, we strongly recommend that you contact our sales department for more information. This instruction sheet is only to be used for the assembly of Advance Adapter components. We recommend that a service manual pertaining to your vehicle be obtained for specific torque values, wiring diagrams and other related equipment. These manuals are normally available at automotive dealerships and parts stores.