

ADVANCE ADAPTERS INC.

P.O. Box 247, 4320 Aerotech Center Way

Paso Robles, CA 93447

Telephone: (800) 350-2223 Fax: (805) 238-4201

P/N: 716839

PAGE 1 OF 1

Page Rev. Date: 12-18-08

TOYOTA STEERING BOX MOUNTING PLATE

KIT CONSISTS OF:

No.	Qty	Part No.	Description
1.	1	716839A	BOX MOUNTING PLATE
2.	1	716839B	FRAME ENCLOSURE
3.	4	724303	7/16 LOCK WASHERS
4.	2	724343	7/16-14 X 2" HHCS GRD8
5.	1	724344	7/16-14 X 3.5 HHCS GRD8
6.	1	724346	7/16-14 X 4.5" HHCS GRD8

INSTALLATION INSTRUCTIONS:

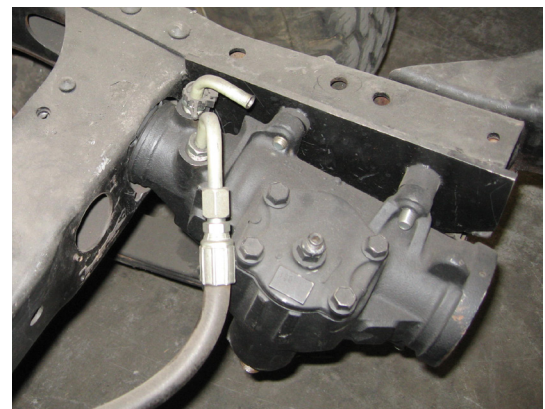
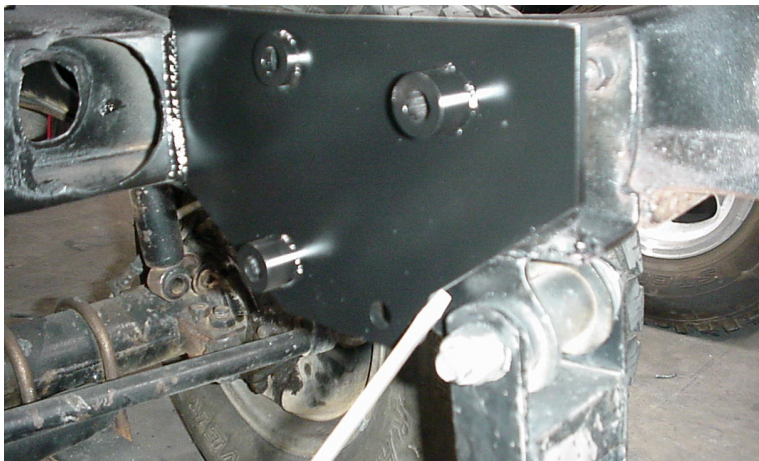
This kit is a weld-on kit only. The components in this kit fit a Saginaw steering box. The steering box mounting plate welds to the driver's side frame rail; and a frame enclosure is provided for the passenger side frame rail for added strength.

The steering box and mounting plate will not interfere with existing tow hooks or bumper mounting brackets. This kit also allows proper clearance for winch mounting kits and steering correction kits.

A 3" access hole must be cut through the front cross support for clearance of the steering shaft and spud shaft. The location of the box should also provide ample clearance for power steering lines - with reference to the front body panel.

Once the mounting plate has been welded to the frame, the top two bolt holes for the steering box must be drilled through the frame rail. This should be done by using the mounting plate holes as a alignment guide.

DO NOT OVER TIGHTEN BOLTS.



SPECIAL NOTE: The components packaged in this kit have been assembled and machined for specific type of conversions. Modifications to any of the components will void any possible warranty or return privileges. If you do not fully understand modifications or changes that will be required to complete your conversion, we strongly recommend that you contact our sales department for more information. This instruction sheet is only to be used for the assembly of Advance Adapter components. We recommend that a service manual pertaining to your vehicle be obtained for specific torque values, wiring diagrams and other related equipment. These manuals are normally available at automotive dealerships and parts stores.