

# ADVANCE ADAPTERS INC.

P.O. Box 247, 4320 Aerotech Center Way

Paso Robles, CA 93447

Telephone: (800) 350-2223 Fax: (805) 238-4201

# P/N: 716104

PAGE 1 OF 1

Page Rev. Date: 03-01-93

## SPECIAL CENTERFORCE CLUTCH DISC 10-1/2" DIA. X 1"-14 SPLINE

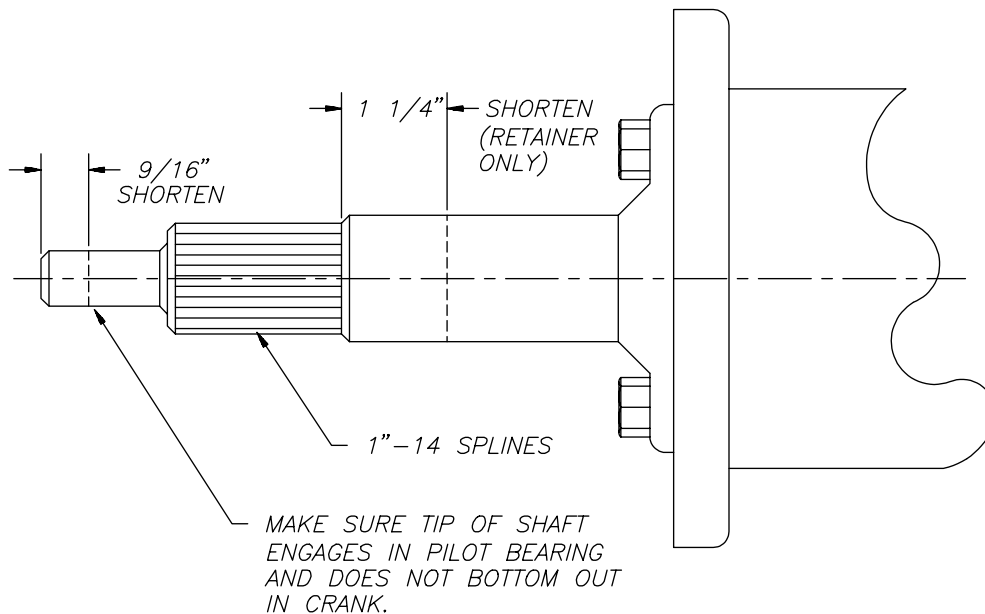
### KIT CONSISTS OF:

No.	Qty	Part No.	Description
1.	1	716104	CLUTCHDISC
2.	1	GM001	S10/S15 INSTRUCTION MANUAL

### NOTE:

This special clutch disc has specially been manufactured for Advance Adapters. We have supplied you with the Chevy conversion booklet that will direct you with the proper installation into the Chevy bellhousing. Caution should be given to make sure that the clutch splines on the input shaft have sufficient clearance with the inner hub of the clutch disc hub. There are 11" clutch discs available that are offered with the anti-chatter clutch hub that we have had considerable difficulty in using on the S10 conversions. This disc has performed outstanding when used with the Chevy V8 engine conversions. This disc can also be used on 11" flywheels and pressure plates without any difficulty. We do recommend a 10-1/2" pressure plate. On S10 conversions using the manual transmission, you must use a bellhousing that has a slave cylinder clutch control. We recommend the GM bellhousing used on trucks 1989 and newer. The slave cylinder is located on the lower right hand side (passenger side) of the vehicle. We offer this bellhousing as Part No. 712547. The GM part numbers are available in both the Advance Adapter Buyer's Guide and S10 Instruction Manual.

When using the T4 or T5 original transmission with the new Chevy bellhousing, you will be required to make two modifications to the front of the original transmission. The input shaft must be shortened and the front bearing collar must also be shortened. Refer to the sketch below, or the S10 Instruction Manual for specific requirements.



**SPECIAL NOTE:** The components packaged in this kit have been assembled and machined for specific type of conversions. Modifications to any of the components will void any possible warranty or return privileges. If you do not fully understand modifications or changes that will be required to complete your conversion, we strongly recommend that you contact our sales department for more information. This instruction sheet is only to be used for the assembly of Advance Adapter components. We recommend that a service manual pertaining to your vehicle be obtained for specific torque values, wiring diagrams and other related equipment. These manuals are normally available at automotive dealerships and parts stores.