

ADVANCE ADAPTERS INC.

P.O. Box 247, 4320 Aerotech Center Way

Paso Robles, CA 93447

Telephone: (800) 350-2223 Fax: (805) 238-4201

P/N: 712523

PAGE 1 OF 2

Page Rev. Date: 10-23-96

TOYOTA L/C 3 SPEED TRANSMISSION TO CHEVY V8 ENGINES

KIT CONSISTS OF:

<u>No.</u>	<u>Qty</u>	<u>Part No.</u>	<u>Description</u>
1.	1	711525	ADAPTER PLATE
2.	1	716170	PILOT BUSHING
3.	1	716222	BEARING RETAINER
4.	1	716514	GASKET
5.	1	716719	SEAL (Toyota #90311 28004)
6.	4	723116	5/16" LOCK WASHER
7.	2	725002	1/2" LOCK WASHER
8.	2	725008	H.H.C.S. 1/2"-13 x 1-1/2" LONG
9.	4	720010	S.H.C.S. 8mm x 40mm
10.	2	725017	S.H.C.S. 1/2"-13 x 1-3/4" LONG
11.	2	725019	1/2" HIGH COLLAR LOCK WASHER
12.	1	TLC001	LAND CRUISER INSTRUCTION MANUAL

INSTALLATION INSTRUCTIONS:

When converting the Toyota 3 speed transmission, you will find that the original input shaft length is approximately 3/8" too long for use with the Chevy bellhousing. The adapter plate and special bearing retainer will provide the necessary spacing to pull the transmission back and make the necessary lengths compatible for the Chevy bellhousing. Make sure that the new seal is installed with the open side towards the transmission and that the gasket is properly installed between the new retainer and the front of the transmission. New metric bolts have been included for installation of the thicker bearing retainer. When using this transmission on V8 conversions, driveshaft modifications will be required.

1. Remove the original 3 speed bearing retainer and install the new retainer equipped with the new seal. Be sure gasket is used between transmission and bearing retainer and use the longer metric bolts and lock washers for installation. Make sure that the bolts do not protrude into the transmission gear assembly.
2. Fit the new steel plate onto the front of the Toyota 3 speed transmission and make sure that all bolts will have necessary clearance.
3. Drill the lower transmission mounting holes out for clearance of the new 1/2" bellhousing bolts.
4. Install new pilot bearing into engine crank. Make sure that the contact with the Toyota transmission input shaft is correct.
5. Bolt the transmission to the Chevy bellhousing using the hex bolts in the upper locations and the socket head bolts in the lower locations.
6. The following Chevy parts will be necessary:

Clutch Release Lever

Pressure Plate 11" - Centerforce CF165473S

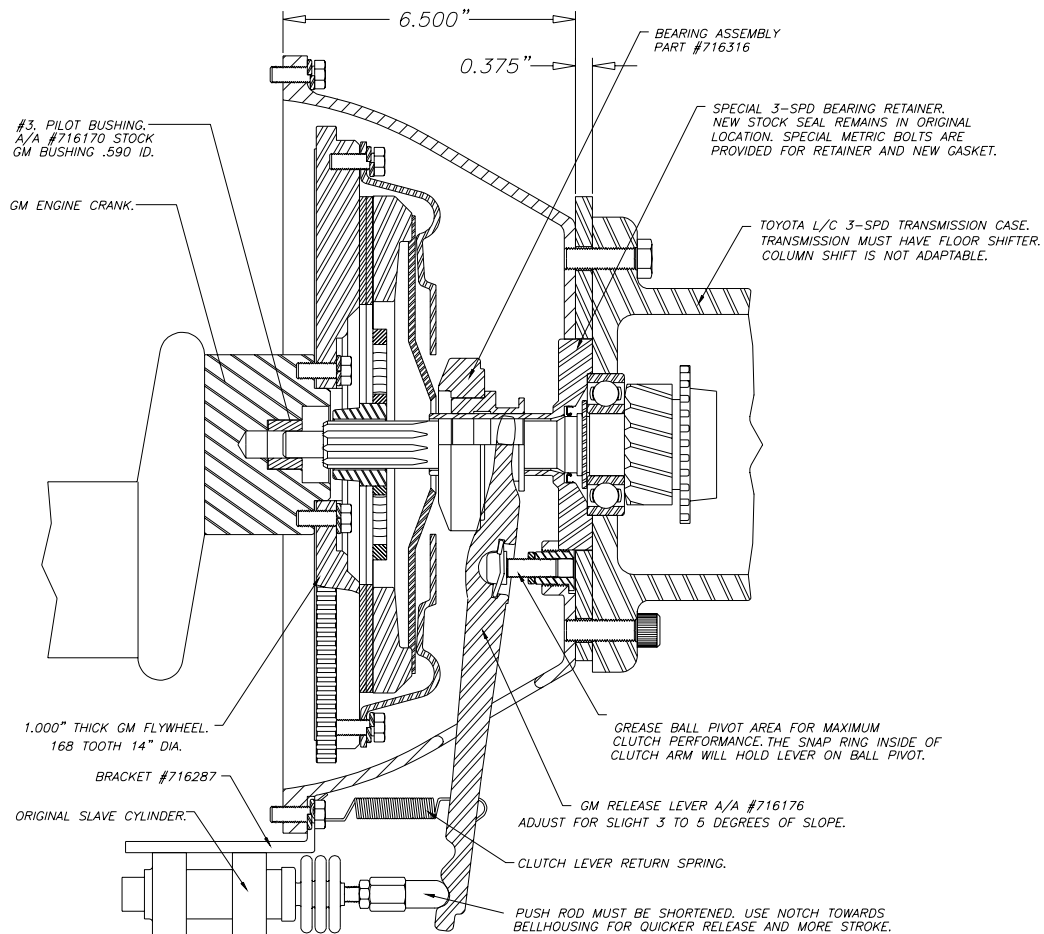
Clutch Disc with 1-1/8"-10 Spline

Flywheel - 168 tooth

Bellhousing with Small Index Diameter of 4.686" (must have 14" inside clearance)

SPECIAL NOTE: The components packaged in this kit have been assembled and machined for specific type of conversions. Modifications to any of the components will void any possible warranty or return privileges. If you do not fully understand modifications or changes that will be required to complete your conversion, we strongly recommend that you contact our sales department for more information. This instruction sheet is only to be used for the assembly of Advance Adapter components. We recommend that a service manual pertaining to your vehicle be obtained for specific torque values, wiring diagrams and other related equipment. These manuals are normally available at automotive dealerships and parts stores.

TOYOTA L/C 3 SPEED TRANSMISSION TO CHEVY V8 ENGINES



NOTES:

1. Be sure to grease inside pocket diameter of bearing, this will provide lubrication on the bearing retainer.
2. Release bearing should have .060" clearance between flywheel fingers and face of bearing.
3. Clutch disc should have .030" clearance between flywheel and disc when fully disengaged.
4. The 10.500" clutch assembly and small flywheel is not recommended. The 168 tooth flywheel should be used if at all possible.
5. Do not use original Toyota Land Cruiser clutch disc.

SPECIAL NOTE: The components packaged in this kit have been assembled and machined for specific type of conversions. Modifications to any of the components will void any possible warranty or return privileges. If you do not fully understand modifications or changes that will be required to complete your conversion, we strongly recommend that you contact our sales department for more information. This instruction sheet is only to be used for the assembly of Advance Adapter components. We recommend that a service manual pertaining to your vehicle be obtained for specific torque values, wiring diagrams and other related equipment. These manuals are normally available at automotive dealerships and parts stores.